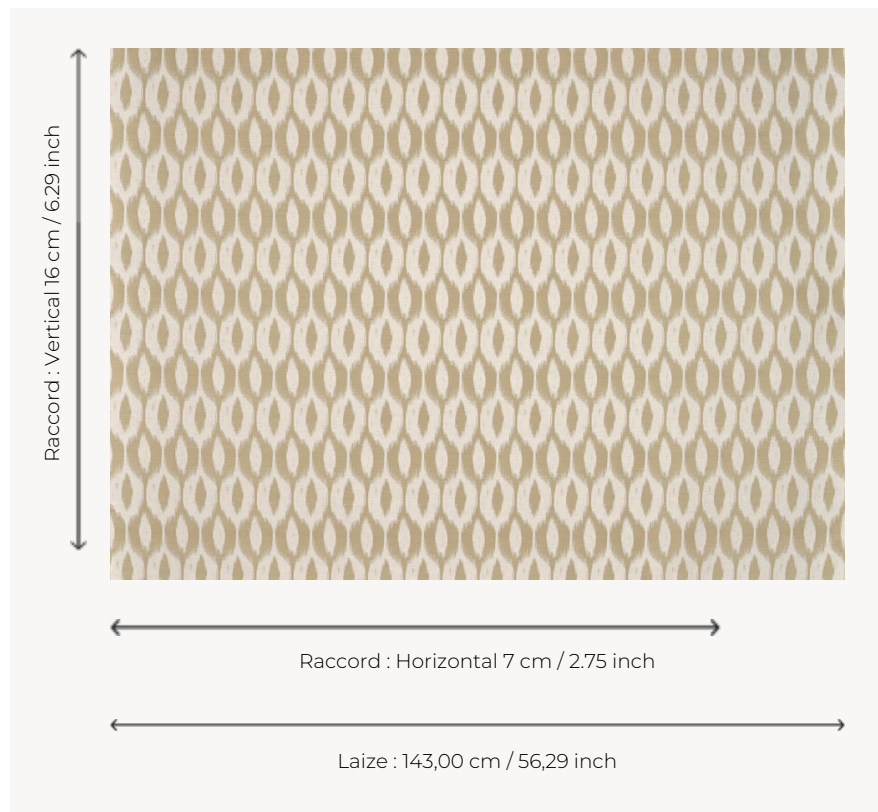


T0737001 IKAT OGEE SMALL

A smaller-scale version of the IKAT OGEE motif, this sublime contemporary two-tone ikat combines ethnic and chic spirit.

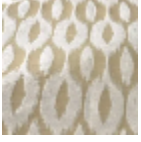
T0737001 - Oatmeal



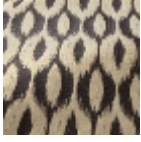
Thorp of London

TYPE	Jacquards
TECHNIQUE	Jacquard woven
SALES UNIT	Available per meter/yard
COMPOSITION	55 % Viscose - 27 % Polyester - 18 % Linen
WARP	TW006 White polyester
NB OF WEFT COLOURS	2
WEFT	A - PPY OATMEAL B - FFY BLEACHED
DESIGN WIDTH	143 cm / 56,29 inch
REPEAT	H: 7 cm - 2,75 inch V: 16 cm - 6,29 inch Straight repeat
WEIGHT	42 gr / ml
CARE	
INFORMATION	Natural fiber irregularity

2 Colors



T0737001
Oatmeal



T0737002
BLACK