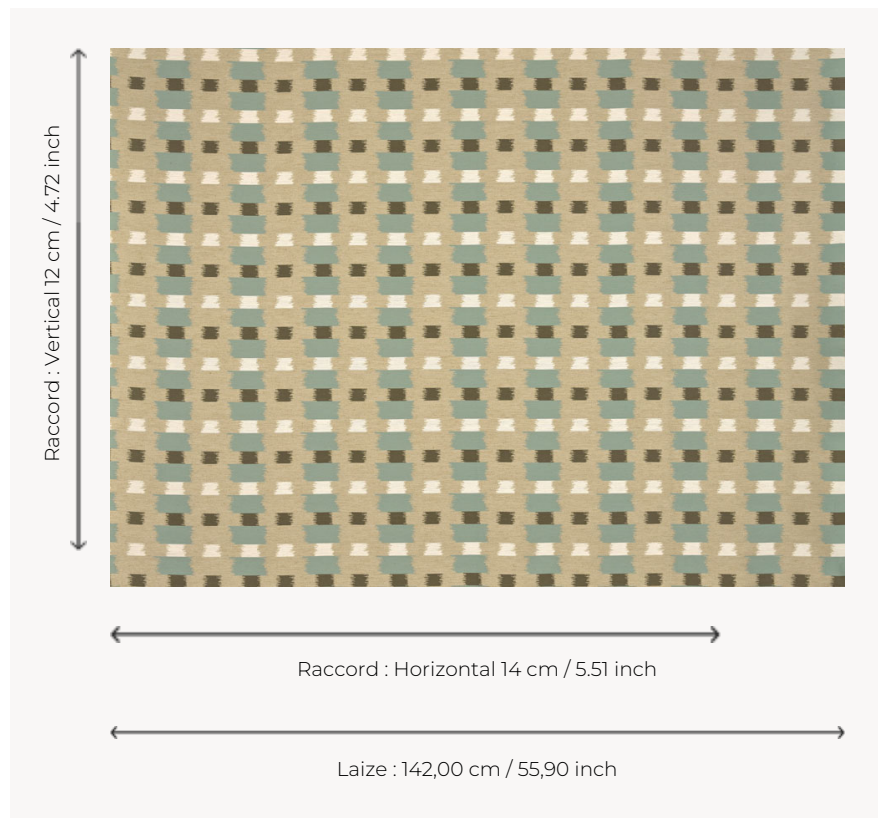


T0738002 JUNCTION STRIPE

These ikat checks are mainly found in Central Asia, where they adorn magnificent silk chapans. Here in jacquard fabric, they are also available in print in the dedicated Thorp of London collection.

T0738002 - Lichen



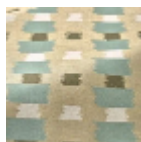
Thorp of London

| | |
|---------------------------|--|
| TYPE | Jacquards |
| TECHNIQUE | Jacquard woven |
| SALES UNIT | Available per meter/yard |
| COMPOSITION | 38 % Viscose - 32 % Cotton - 16 % Linen - 14 % Polyester |
| WARP | TW006 White polyester |
| NB OF WEFT COLOURS | 4 |
| WEFT | A - FFY PARCHMENT B - CCY LICHEN C - CCY HONEY D - CCY CACTUS |
| DESIGN WIDTH | 142 cm / 55,90 inch |
| REPEAT | H: 14 cm - 5,51 inch V: 12 cm - 4,72 inch Straight repeat |
| WEIGHT | 40 gr / ml |
| CARE | |
| NOTES | Reversible |
| INFORMATION | Natural fiber irregularity |

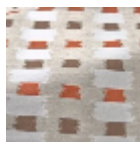
4 Colors



T0738001
Mushroom



T0738002
Lichen



T0738003
Henna



T0738004
Atlantic