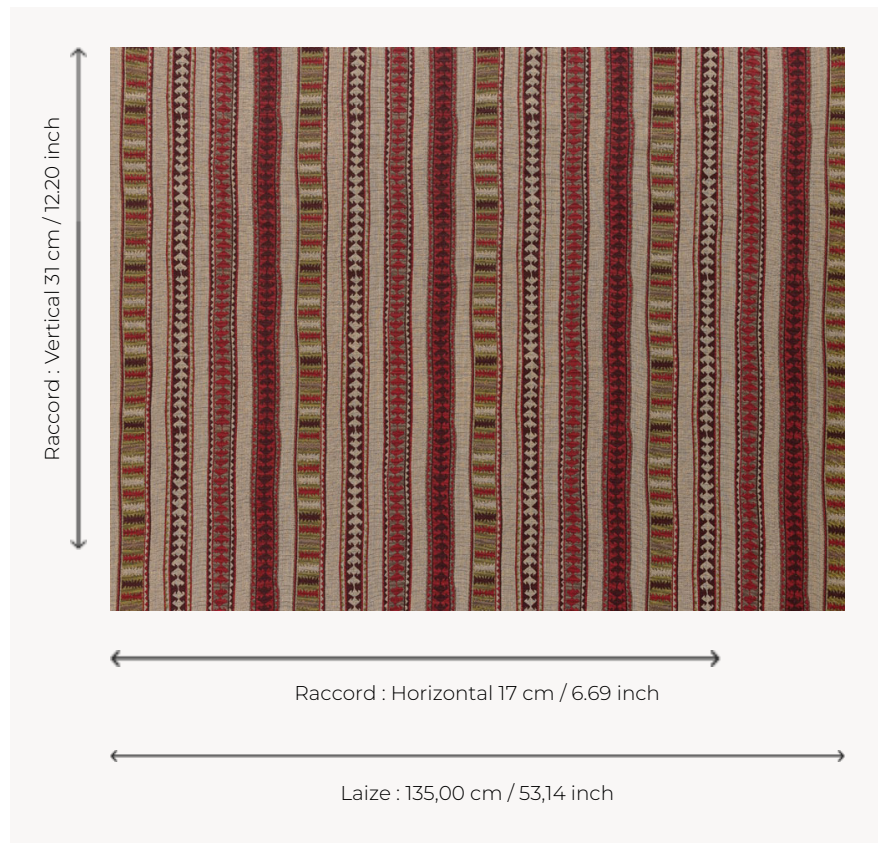


T0740001 KILIM STRIPE

KILIM STRIPE features an ethnic stripe inspired by traditional kilims.

T0740001 - Ogee red



Thorp of London

TYPE	Jacquards
TECHNIQUE	Jacquard woven
SALES UNIT	Available per meter/yard
COMPOSITION	80 % Cotton - 15 % Viscose - 5 % Linen
WARP	TW001 Black cotton
NB OF WEFT COLOURS	5
WEFT	A - CCY OGEE RED B - CCY MUSHROOM C - FFY BLACKBERRY D - CCY CADMIUM E - CCY STONE
DESIGN WIDTH	135 cm / 53,14 inch
REPEAT	H: 17 cm - 6,69 inch V: 31 cm - 12,20 inch Straight repeat
WEIGHT	560 gr / ml
CARE	
NOTES	Reversible
INFORMATION	Stripes parallel to selvages Natural fiber irregularity

2 Colors



T0740001
Ogee red



T0740002
Azure