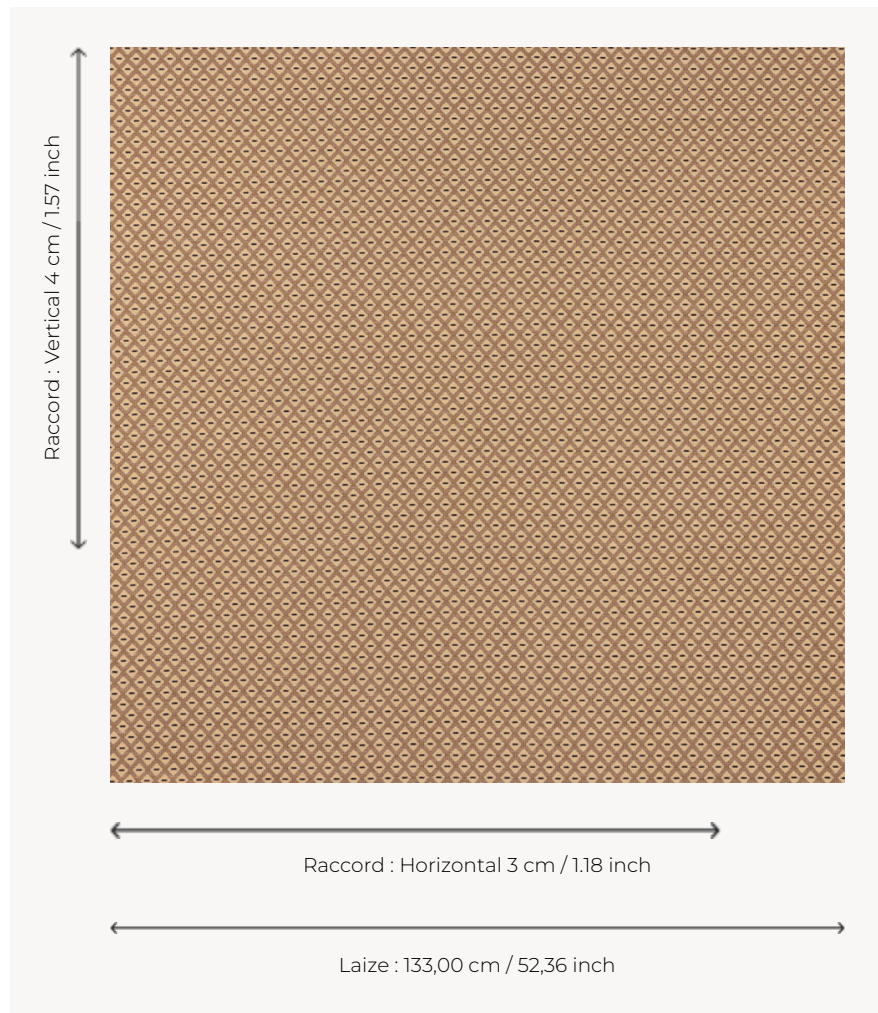


T0741002 ZIRCONIA

ZIRCONIA plays with geometric shapes, with its diamond pattern on a striped background.

T0741002 - Coffee



Thorp of London

TYPE	Jacquards
TECHNIQUE	Jacquard woven
SALES UNIT	Available per meter/yard
COMPOSITION	100 % Cotton
WARP	TW002 Natural cotton
NB OF WEFT COLOURS	3
WEFT	A - CCY COFFEE B - CCY BEIGE C - CFY BLACK
DESIGN WIDTH	133 cm / 52,36 inch
REPEAT	H: 3 cm - 1,18 inch V: 4 cm - 1,57 inch Straight repeat
WEIGHT	40 gr / ml
CARE	

4 Colors



T0741001
Ogee red



T0741002
Coffee



T0741003
Azure



T0741004
Carnation