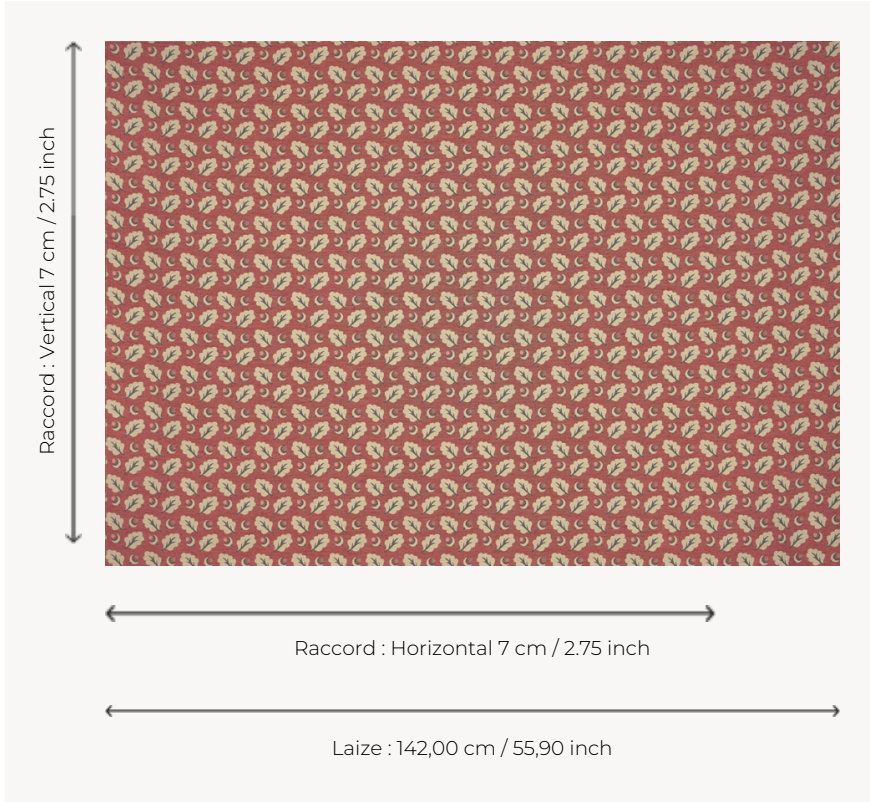


## T0743002 ACORN

With its scattering of foliage and acorns seemingly blowing in the wind, the ACORN pattern evokes the spirit of autumn.

### T0743002 - NEW TOMATO



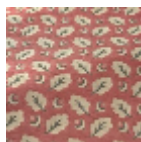
### Thorp of London

<b>TYPE</b>	Jacquards
<b>TECHNIQUE</b>	Jacquard woven
<b>SALES UNIT</b>	Available per meter/yard
<b>COMPOSITION</b>	86 % Cotton - 14 % Polyester
<b>WARP</b>	TW006 White polyester
<b>NB OF WEFT COLOURS</b>	3
<b>WEFT</b>	A - CCY NEW TOMATO B - CCY TWINE C - CCY PINE
<b>DESIGN WIDTH</b>	142 cm / 55,90 inch
<b>REPEAT</b>	H: 7 cm - 2,75 inch V: 7 cm - 2,75 inch Straight repeat
<b>WEIGHT</b>	38 gr / ml
<b>CARE</b>	

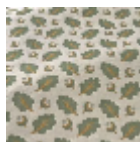
## 3 Colors



T0743001  
ATLANTIC



T0743002  
NEW TOMATO



T0743003  
Ivy