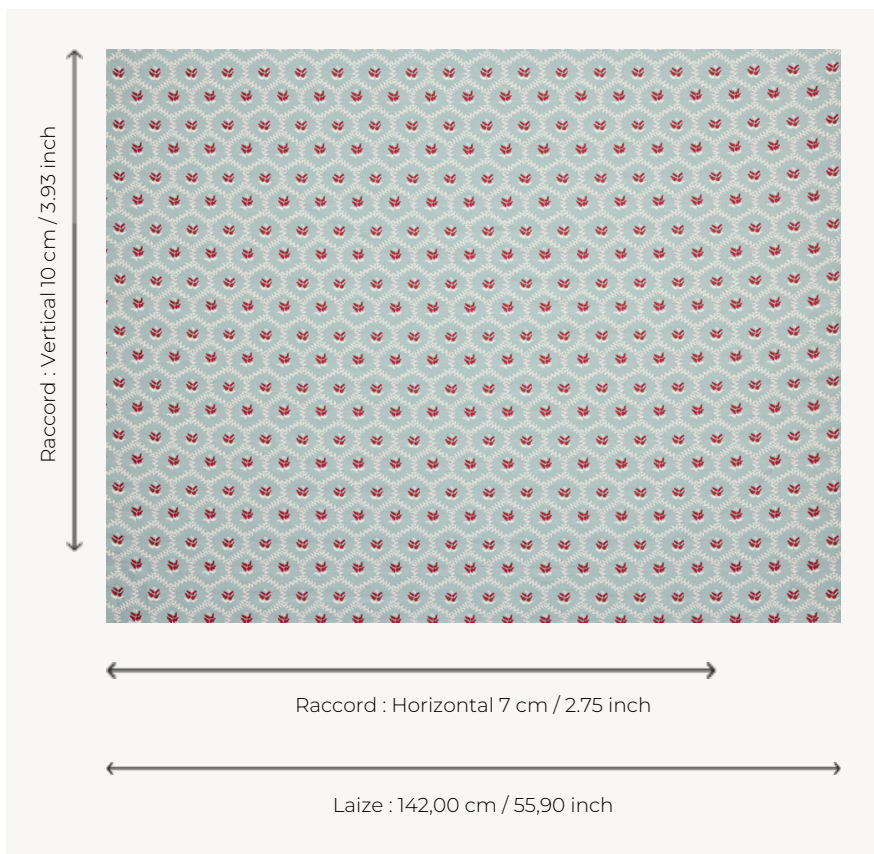


T0744001 CHLOE THORP

With its delightful floral honeycomb pattern, CHLOE THORP is a nod to the charm and simplicity of 18th-century brocaded cottons used in fashion and upholstery. This jacquard fabric is also available in a printed version from our workshops in Norfolk, England.

T0744001 - Aqua



Thorp of London

| | |
|---------------------------|---|
| TYPE | Jacquards |
| TECHNIQUE | Jacquard woven |
| SALES UNIT | Available per meter/yard |
| COMPOSITION | 86 % Cotton - 14 % Polyester |
| WARP | TW006 White polyester |
| NB OF WEFT COLOURS | 4 |
| WEFT | A - CCY AQUA / LICHEN B - CCY HONEY C - CCY NEW TOMATO D - CCY KENYA |
| DESIGN WIDTH | 142 cm / 55,90 inch |
| REPEAT | H: 7 cm - 2,75 inch V: 10 cm - 3,93 inch Straight repeat |
| WEIGHT | 40 gr / ml |
| CARE | |

4 Colors



T0744001
Aqua



T0744002
Carnation



T0744003
Stone



T0744004
Beige