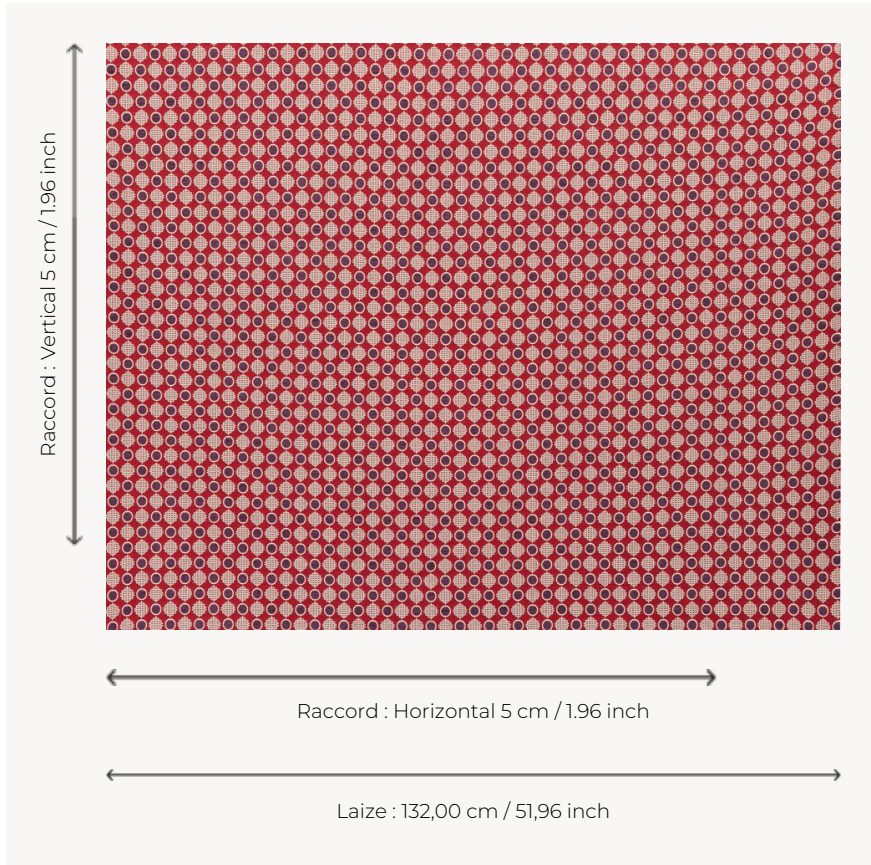


# T0746001 CHENILLE DOT

CHENILLE DOT features a small geometric pattern for maximum effect.

## T0746001 - Ogee red



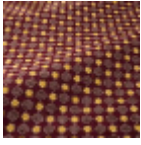
## Thorp of London

<b>TYPE</b>	Chenille - Fibres douces - Jacquards
<b>TECHNIQUE</b>	Jacquard woven
<b>SALES UNIT</b>	Available per meter/yard
<b>COMPOSITION</b>	61 % Cotton - 29 % Viscose - 10 % Linen
<b>WARP</b>	TW004 Black & White cotton
<b>NB OF WEFT COLOURS</b>	3
<b>WEFT</b>	A - CCY OGEE RED B - FFY BLEACHED C - CFY AUBERGINE
<b>DESIGN WIDTH</b>	132 cm / 51,96 inch
<b>REPEAT</b>	H: 5 cm - 1,96 inch V: 5 cm - 1,96 inch Straight repeat
<b>WEIGHT</b>	27 gr / ml
<b>CARE</b>	
<b>INFORMATION</b>	Natural fiber irregularity

## 3 Colors



T0746001  
Ogee red



T0746002  
Prune



T0746003  
Atlantic