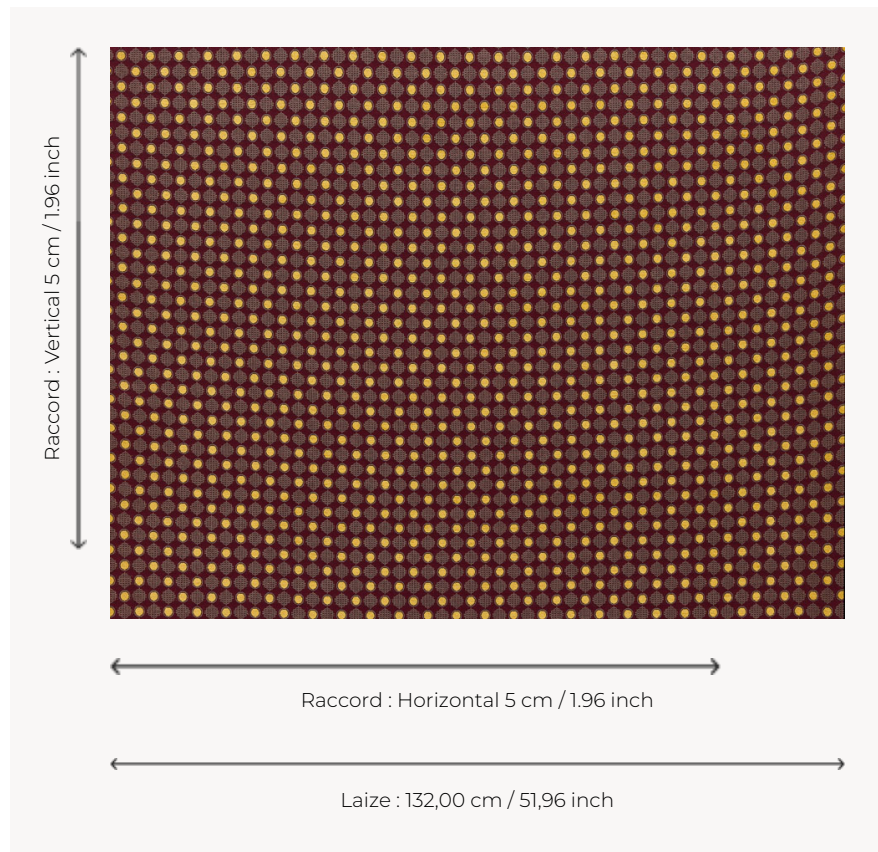


T0746002 CHENILLE DOT

CHENILLE DOT features a small geometric pattern for maximum effect.

T0746002 - Prune



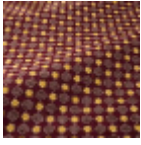
Thorp of London

TYPE	Chenille - Fibres douces - Jacquards
TECHNIQUE	Jacquard woven
SALES UNIT	Available per meter/yard
COMPOSITION	61 % Cotton - 29 % Viscose - 10 % Linen
WARP	TW001 Black cotton
NB OF WEFT COLOURS	3
WEFT	A - CCY PRUNE B - FFY NUTMEG C - CFY GOLD
DESIGN WIDTH	132 cm / 51,96 inch
REPEAT	H: 5 cm - 1,96 inch V: 5 cm - 1,96 inch Straight repeat
WEIGHT	27 gr / ml
CARE	
INFORMATION	Natural fiber irregularity

3 Colors



T0746001
Ogee red



T0746002
Prune



T0746003
Atlantic