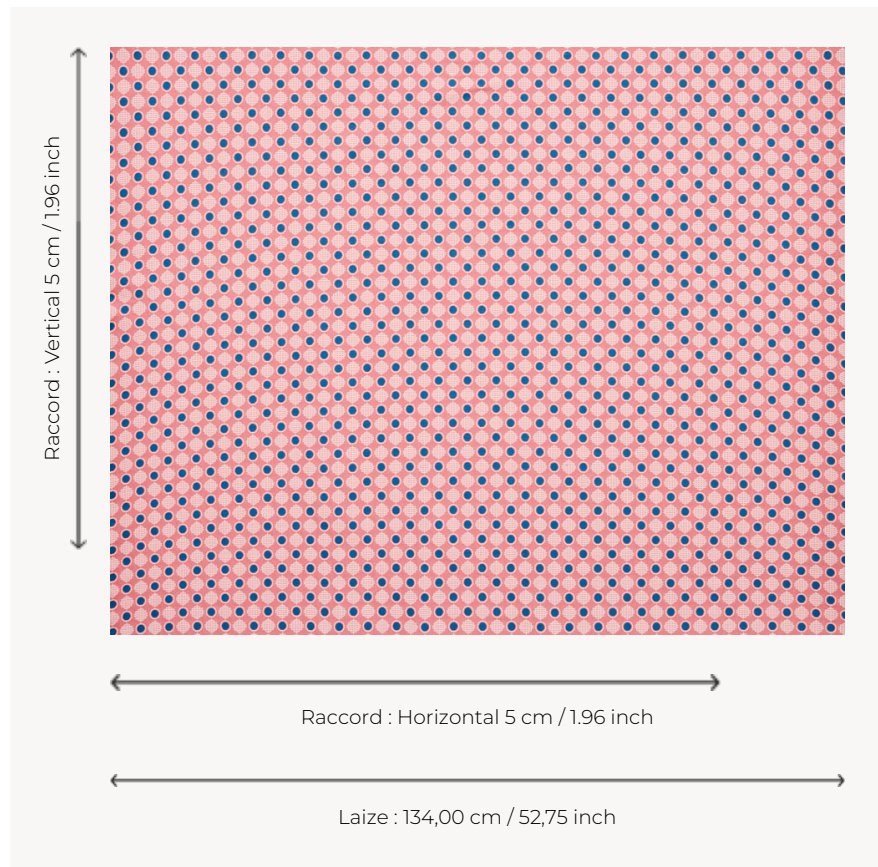


## T0747001 CHENILLE DOT COTTON

CHENILLE DOT is a small geometric pattern, here made with linen given it a more rustic effect.

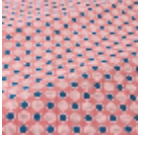
### T0747001 - Wild rose



### Thorp of London

<b>TYPE</b>	Jacquards
<b>TECHNIQUE</b>	Jacquard woven
<b>SALES UNIT</b>	Available per meter/yard
<b>COMPOSITION</b>	100 % Cotton
<b>WARP</b>	TW002 Natural cotton
<b>NB OF WEFT COLOURS</b>	3
<b>WEFT</b>	A - CCY WILD ROSE B - CCY BLEACHED C - CCY AZURE
<b>DESIGN WIDTH</b>	134 cm / 52,75 inch
<b>REPEAT</b>	H: 5 cm - 1,96 inch V: 5 cm - 1,96 inch Straight repeat
<b>WEIGHT</b>	34 gr / ml
<b>CARE</b>	

# 1 Colors



T0747001  
Wild rose