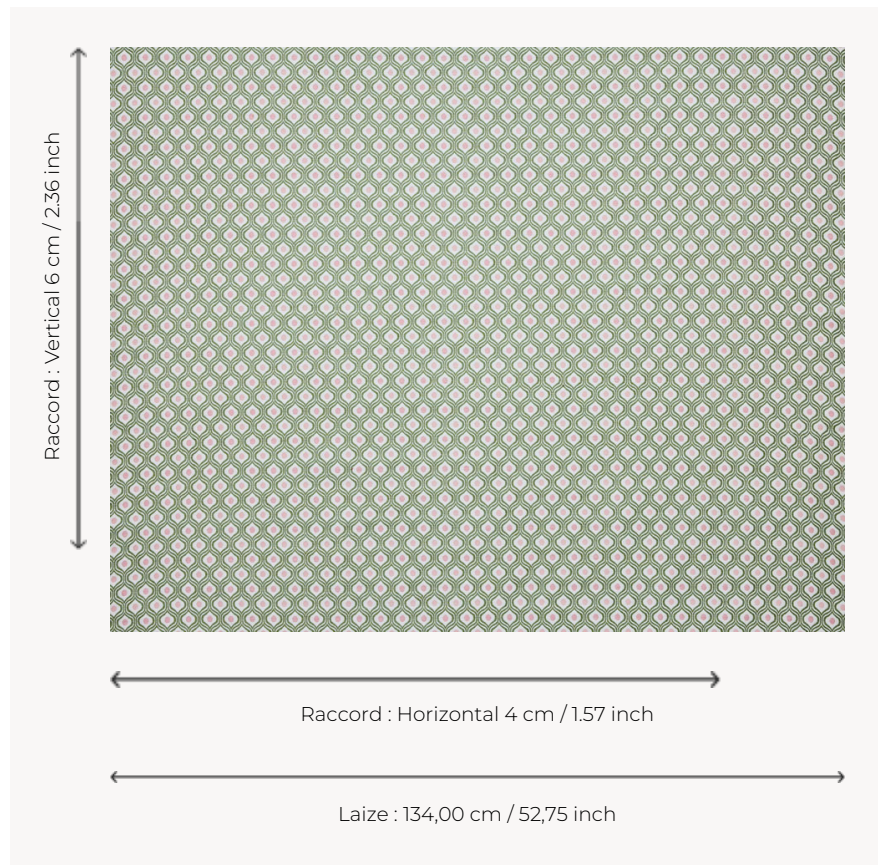



T0750001 OGEE DOT

OGEE DOT is a 70'S-style jacquard with a stylized mandorla motif.

T0750001 - Natural



Thorp of London

TYPE	Chenille - Fibres douces - Jacquards
TECHNIQUE	Jacquard woven
SALES UNIT	Available per meter/yard
COMPOSITION	54 % Viscose - 23 % Linen - 23 % Cotton
WARP	TW002 Natural cotton
NB OF WEFT COLOURS	6
WEFT	A - FFY BLEACHED B - FFY FERN / SAGE C - CCY CARNATION D - FFY PINK E - CCY CARNATION F - FFY PINK
DESIGN WIDTH	134 cm / 52,75 inch
REPEAT	H: 4 cm - 1,57 inch V: 6 cm - 2,36 inch Straight repeat
WEIGHT	26 gr / ml
CARE	

INFORMATION Natural fiber irregularity

3 Colors



T0750001
Natural



T0750002
Saxe



T0750003
Smoke