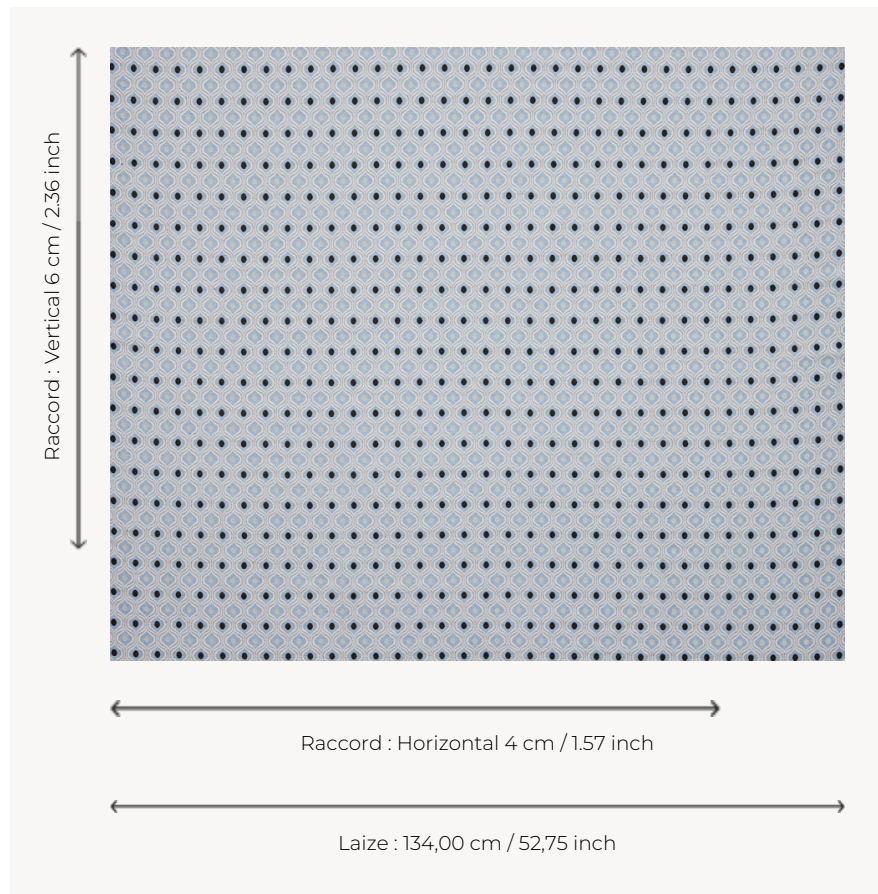


## T0750003 OGEE DOT

OGEE DOT is a 70'S-style jacquard with a stylized mandorla motif.

### T0750003 - Smoke



### Thorp of London

<b>TYPE</b>	Chenille - Fibres douces - Jacquards
<b>TECHNIQUE</b>	Jacquard woven
<b>SALES UNIT</b>	Available per meter/yard
<b>COMPOSITION</b>	54 % Viscose - 23 % Linen - 23 % Cotton
<b>WARP</b>	TW003 Beige cotton
<b>NB OF WEFT COLOURS</b>	6
<b>WEFT</b>	A - FFY SMOKE B - FFY DYED NATURAL C - CCY PALE BLUE D - FFY BLACK E - CCY PALE BLUE F - FFY BLACK
<b>DESIGN WIDTH</b>	134 cm / 52,75 inch
<b>REPEAT</b>	H: 4 cm - 1,57 inch V: 6 cm - 2,36 inch Straight repeat
<b>WEIGHT</b>	26 gr / ml
<b>CARE</b>	
<b>INFORMATION</b>	Natural fiber irregularity

### 3 Colors



T0750001  
Natural



T0750002  
Saxe



T0750003  
Smoke