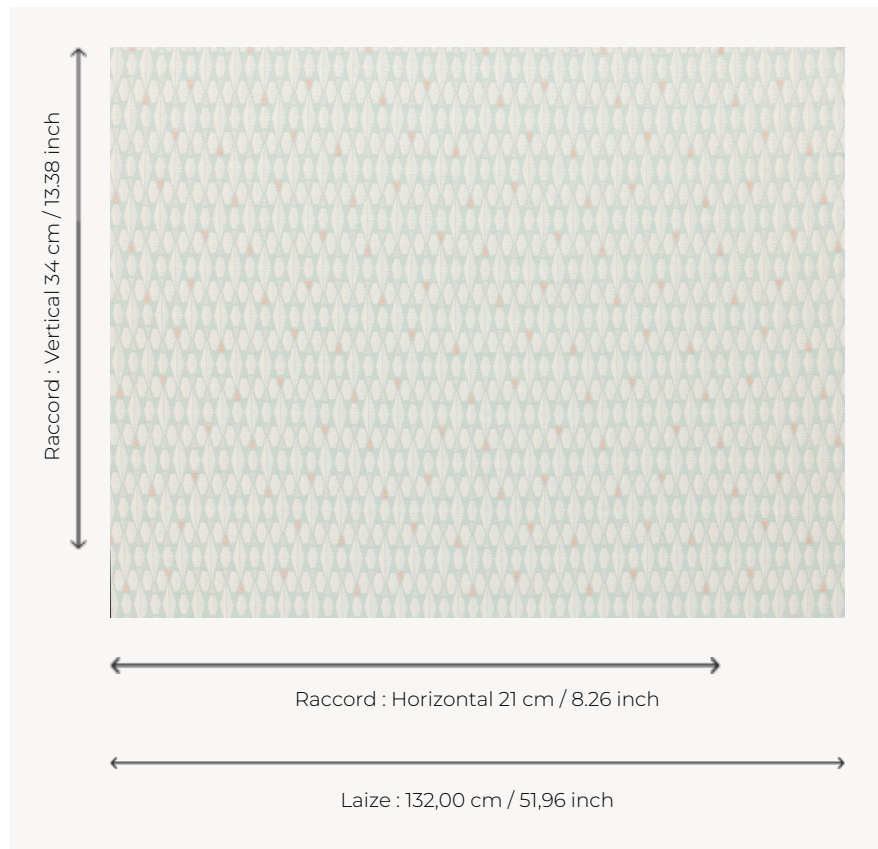


T0751001 CHENILLE DIAMOND

The modernist-inspired CHENILLE DIAMOND jacquard plays with shapes and colours.

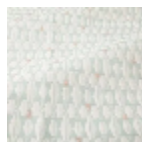
T0751001 - Ice blue



Thorp of London

TYPE	Chenille - Fibres douces - Jacquards
TECHNIQUE	Jacquard woven
SALES UNIT	Available per meter/yard
COMPOSITION	60 % Cotton - 28 % Viscose - 12 % Linen
WARP	TW002 White cotton
NB OF WEFT COLOURS	3
WEFT	A - CCY ICE BLUE / PALE BLUE B - FFY BLEACHED C - CFY BLUSH
DESIGN WIDTH	132 cm / 51,96 inch
REPEAT	H: 21 cm - 8,26 inch V: 34 cm - 13,38 inch Straight repeat
WEIGHT	28 gr / ml
CARE	
INFORMATION	Natural fiber irregularity

4 Colors



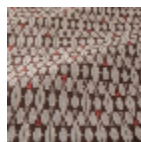
T0751001
Ice blue



T0751002
Black



T0751003
Kenya red



T0751004
Coffee