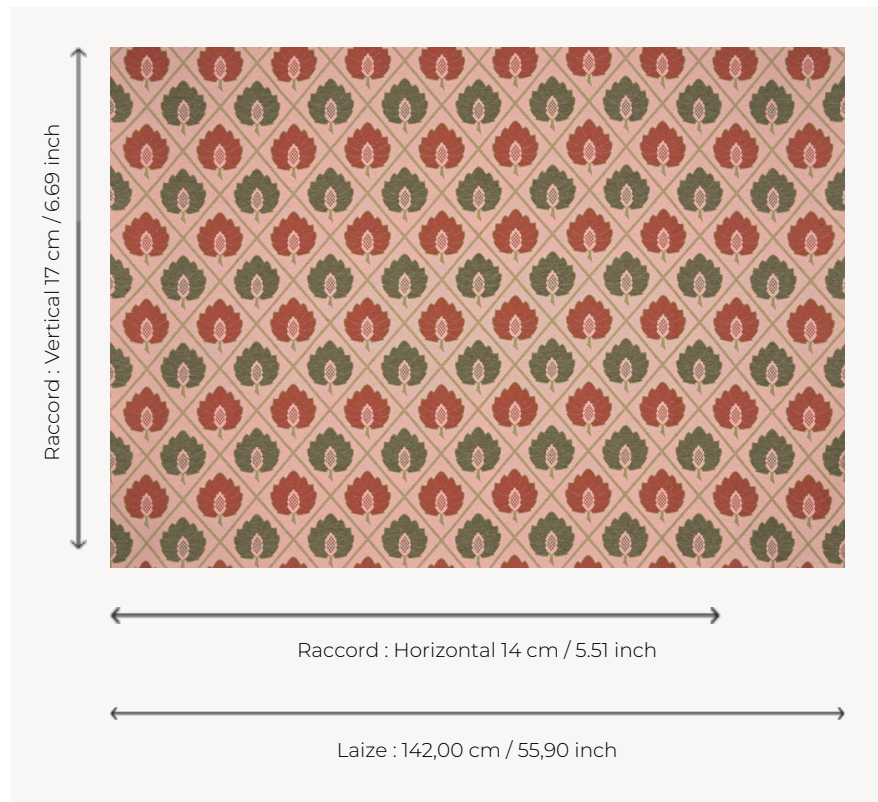


T0754001 LARGE PINEAPPLE LEAF

LARGE PINEAPPLE LEAF is a beautiful jacquard with a lattice pattern of foliage.

T0754001 - Carnation



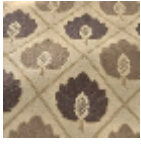
Thorp of London

TYPE	Jacquards
TECHNIQUE	Jacquard woven
SALES UNIT	Available per meter/yard
COMPOSITION	86 % Cotton - 14 % Polyester
WARP	TW006 White polyester
NB OF WEFT COLOURS	4
WEFT	A - CCY CARNATION B - CCY TWINE C - CCY Rust D - CCY CACTUS
DESIGN WIDTH	142 cm / 55,90 inch
REPEAT	H: 14 cm - 5,51 inch V: 17 cm - 6,69 inch Straight repeat
WEIGHT	38 gr / ml
CARE	

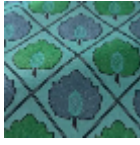
4 Colors



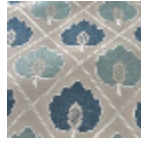
T0754001
Carnation



T0754002
Stone



T0754003
Kingfisher



T0754004
CYAN