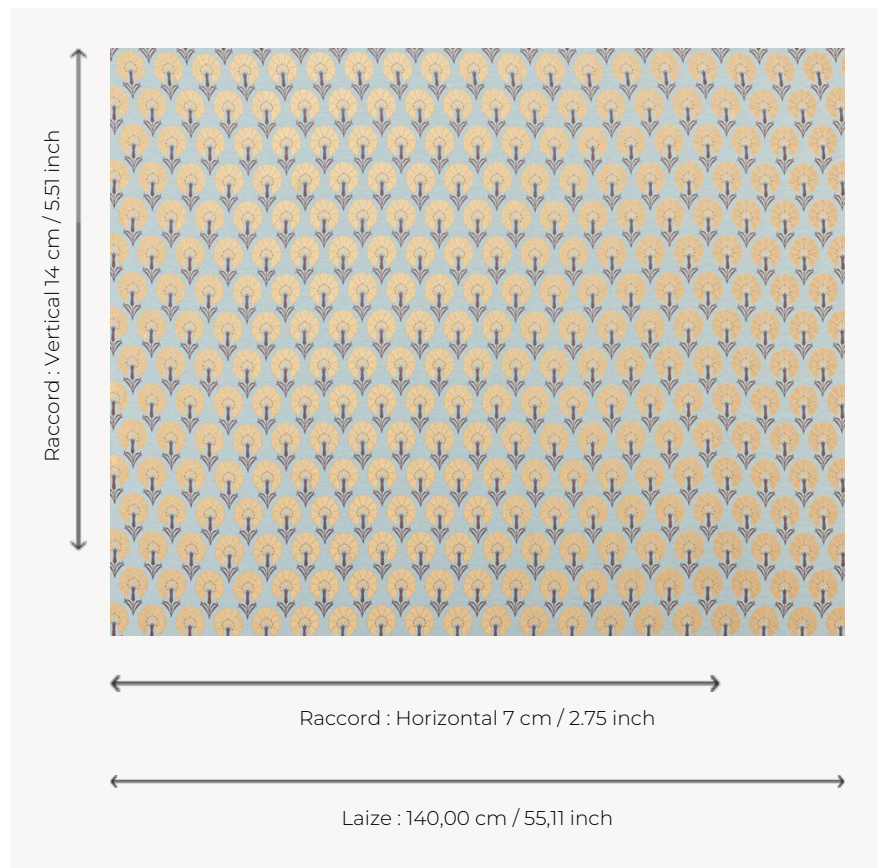


T0755002 SMALL PINES

Silky Jacquard in an oriental vein, SMALL PINES presents us with a seed of carnations that transports us back to refined salons of the early 20th century .

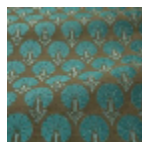
T0755002 - Lagoon



Thorp of London

| | |
|---------------------------|--|
| TYPE | Jacquards - Silks & Silky effect fabrics |
| TECHNIQUE | Jacquard woven |
| SALES UNIT | Available per meter/yard |
| COMPOSITION | 27 % Silk - 23 % Viscose - 20 % Polyester - 20 % Cotton - 10 % Linen |
| WARP | TW006 White polyester |
| NB OF WEFT COLOURS | 3 |
| WEFT | A - FFY LAGOON / CCY ICE BLUE B - SSY BRONZE C - SSY CHOCOLATE |
| DESIGN WIDTH | 140 cm / 55,11 inch |
| REPEAT | H: 7 cm - 2,75 inch V: 14 cm - 5,51 inch Straight repeat |
| WEIGHT | 57 gr / ml |
| CARE | |
| INFORMATION | Natural fiber irregularity |

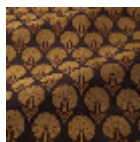
3 Colors



T0755001
Kiwi



T0755002
Lagoon



T0755003
Black