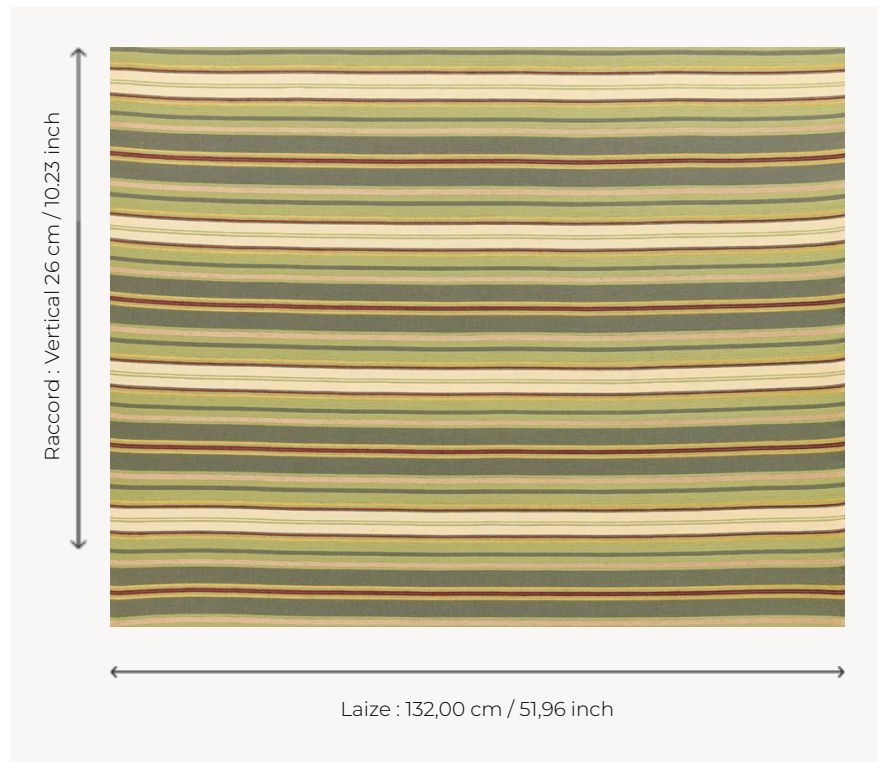


## T0759001 JUSTINE STRIPE

This timeless horizontal stripe is mainly made of cotton.

### T0759001 - Pine

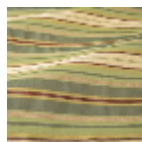


### Thorp of London

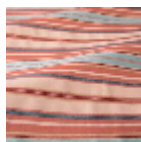
<b>TYPE</b>	Jacquards
<b>TECHNIQUE</b>	Jacquard woven
<b>SALES UNIT</b>	Available per meter/yard
<b>COMPOSITION</b>	76 % Cotton - 17 % Viscose - 7 % Linen
<b>WARP</b>	TW003 Beige cotton
<b>NB OF WEFT COLOURS</b>	6
<b>WEFT</b>	A - CCY PINE B - FFY GRANARY C - FFY PRIMROSE D - FFY OLD GOLD E - FFY WINE F - CCY LEAF
<b>DESIGN WIDTH</b>	132 cm / 51,96 inch
<b>REPEAT</b>	V: 26 cm - 10,23 inch Free match
<b>WEIGHT</b>	40 gr / ml
<b>CARE</b>	

**INFORMATION** Natural fiber irregularity  
Stripes perpendicular to selvedges

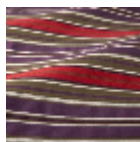
## 3 Colors



T0759001  
Pine



T0759002  
Carnation



T0759003  
Grape