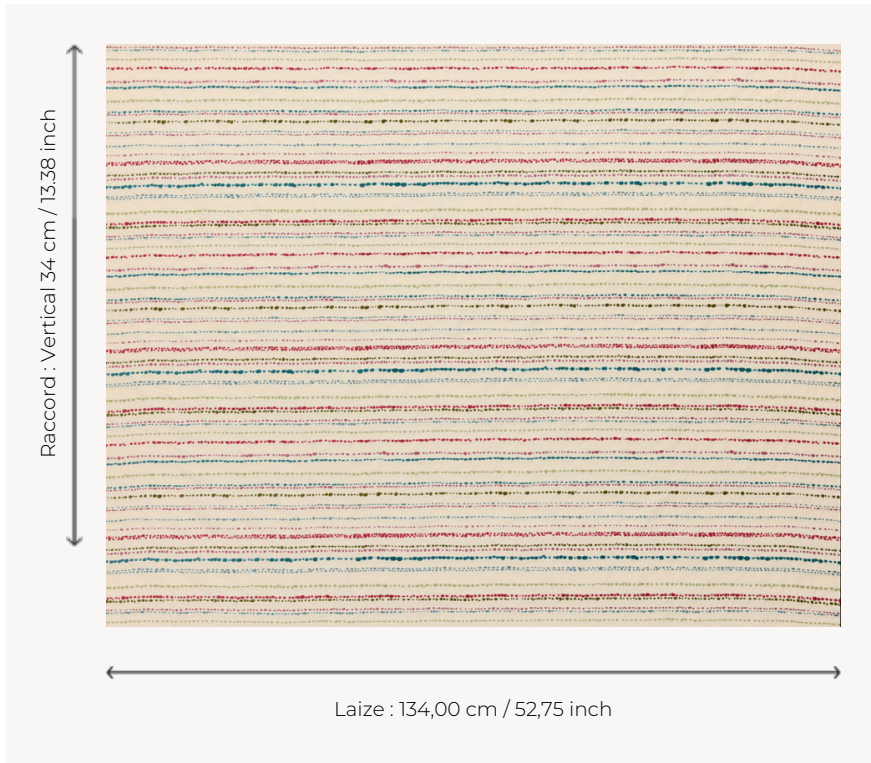


## T0763001 DASHES STRIPE

With its predominantly cotton composition, this jacquard features horizontal dotted lines on a twill background. It offers an original and contemporary take on older style twill fabrics.

### T0763001 - Honey



### Thorp of London

<b>TYPE</b>	Chenille - Fibres douces - Jacquards
<b>TECHNIQUE</b>	Jacquard woven
<b>SALES UNIT</b>	Available per meter/yard
<b>COMPOSITION</b>	84 % Cotton - 11 % Viscose - 5 % Linen
<b>WARP</b>	TW002 Natural cotton
<b>NB OF WEFT COLOURS</b>	7
<b>WEFT</b>	A - CCY HONEY / ECRU B - FFY CORDOVAN C - FFY SEA BLUE D - FFY MUSCAT E - CFY TEAL F - CFY RASPBERRY G - CFY MOSS
<b>DESIGN WIDTH</b>	134 cm / 52,75 inch
<b>REPEAT</b>	V: 34 cm - 13,38 inch Straight repeat
<b>WEIGHT</b>	37 gr / ml
<b>CARE</b>	

<b>INFORMATION</b>	Natural fiber irregularity Stripes perpendicular to selvages
--------------------	---

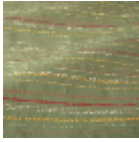
## 3 Colors



T0763001  
Honey



T0763002  
Carnation



T0763003  
Ivy