

T0765002 SHADOW STRIPE

A multicolored cotton stripe with a classic rhythm, SHADOW STRIPE brings summer into your home with its cheerful tones and measured elegance.

T0765002 - Green



Raccord : Horizontal 62 cm / 24.40 inch

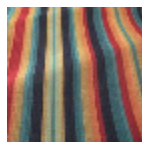


Laize : 134,00 cm / 52,75 inch

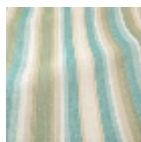
Thorp of London

TYPE	Jacquards
TECHNIQUE	Jacquard woven
SALES UNIT	Available per meter/yard
COMPOSITION	100 % Cotton
WARP	TW002 Natural cotton
NB OF WEFT COLOURS	4
WEFT	A - CCY STONE B - CCY KINGFISHER C - CCY HONEY D - CCY IVY
DESIGN WIDTH	134 cm / 52,75 inch
REPEAT	H: 62 cm - 24,40 inch Straight repeat
WEIGHT	32 gr / ml
CARE	
INFORMATION	Stripes parallel to selvages

2 Colors



T0765001
Multico



T0765002
Green