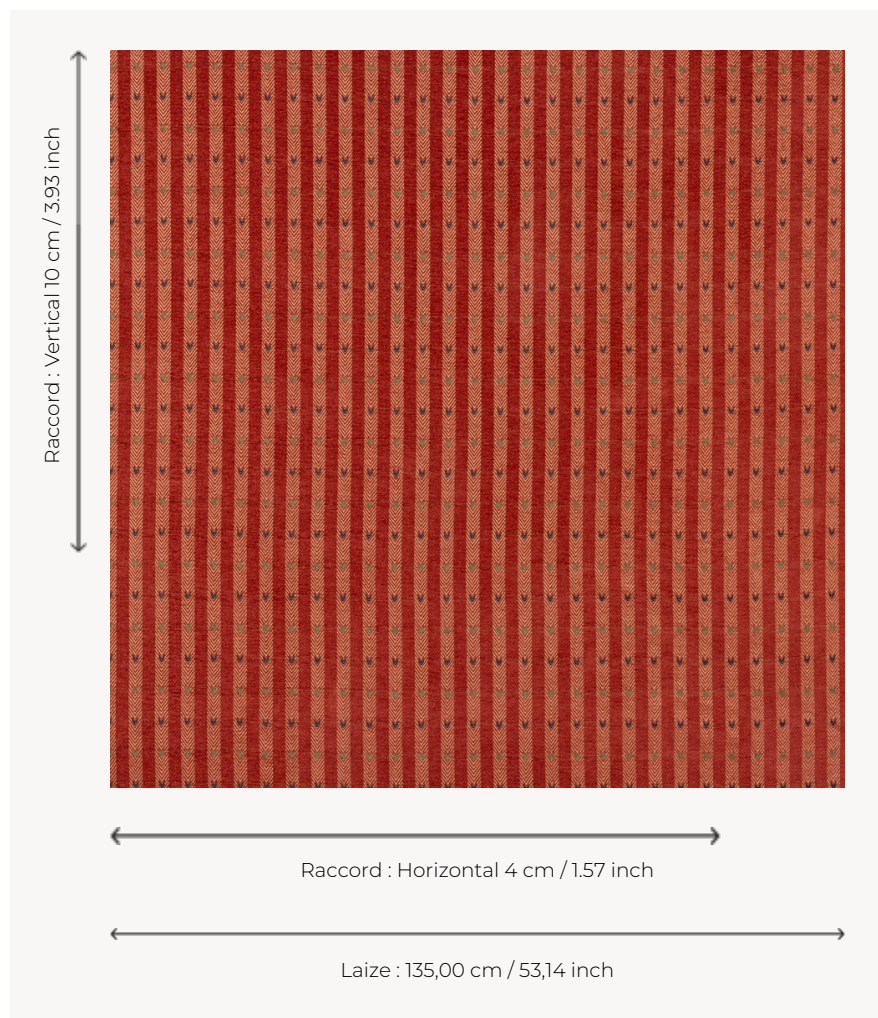


# T0770001 ARROWHEAD CHENILLE

This soft and rustic jacquard skillfully blends chenille yarns and linen in a folk spirit.

## T0770001 - Coral



## Thorp of London

<b>TYPE</b>	Chenille - Fibres douces - Jacquards
<b>TECHNIQUE</b>	Jacquard woven
<b>SALES UNIT</b>	Available per meter/yard
<b>COMPOSITION</b>	91 % Cotton - 6 % Viscose - 3 % Linen
<b>WARP</b>	TW003 Beige cotton
<b>NB OF WEFT COLOURS</b>	3
<b>WEFT</b>	A - CFY CORAL B - FFY BLACKBERRY C - FFY KIWI
<b>DESIGN WIDTH</b>	135 cm / 53,14 inch
<b>REPEAT</b>	H: 4 cm - 1,57 inch V: 10 cm - 3,93 inch Straight repeat
<b>WEIGHT</b>	34 gr / ml
<b>CARE</b>	
<b>INFORMATION</b>	Stripes parallel to selvages Natural fiber irregularity

# 1 Colors



T0770001  
Coral