

## T0775003 JIGSAW STRIPE

With its subtle interplay of weaves, JIGSAW STRIPE has the refined elegance of 18th-century silk pekin.

### T0775003 - Cinnamon



Raccord : Horizontal 14 cm / 5.51 inch



Laize : 144,00 cm / 56,69 inch

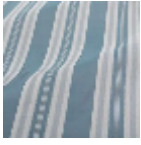
### Thorp of London

<b>TYPE</b>	Jacquards - Silks & Silky effect fabrics
<b>TECHNIQUE</b>	Jacquard woven
<b>SALES UNIT</b>	Available per meter/yard
<b>COMPOSITION</b>	58 % Silk - 42 % Polyester
<b>WARP</b>	TW005 Black polyester
<b>NB OF WEFT COLOURS</b>	2
<b>WEFT</b>	A - SSY CINNAMON B - SSY OLD GOLD
<b>DESIGN WIDTH</b>	144 cm / 56,69 inch
<b>REPEAT</b>	H: 14 cm - 5,51 inch
<b>WEIGHT</b>	120 gr / ml
<b>CARE</b>	
<b>NOTES</b>	Reversible
<b>INFORMATION</b>	Stripes parallel to selvages Pocket weave

## 4 Colors



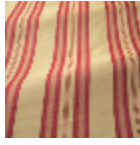
T0775001  
Ivy



T0775002  
Cadet



T0775003  
Cinnamon



T0775004  
Terracotta