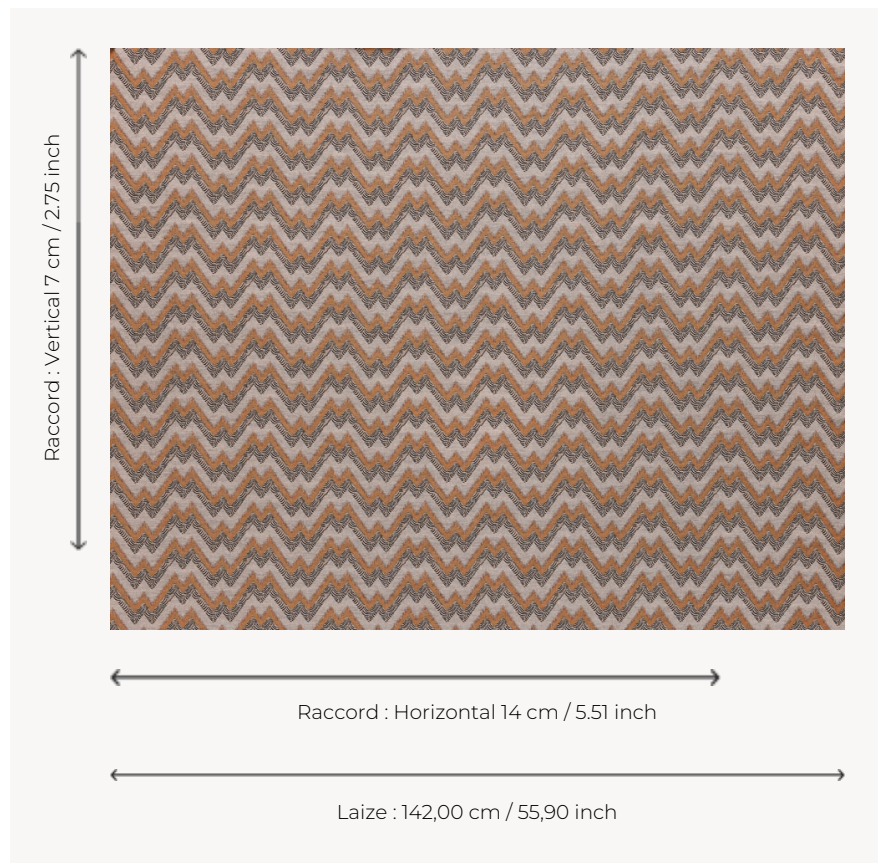


T0778002 THAMES FLAMESTITCH

At the confluence of several inspirations, this jacquard, with a touch of linen, revisits the Hungarian-stitch theme in a contemporary way.

T0778002 - Ginger



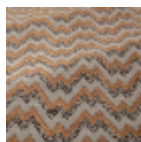
Thorp of London

TYPE	Ikats - Jacquards - Silks & Silky effect fabrics
TECHNIQUE	Jacquard woven
SALES UNIT	Available per meter/yard
COMPOSITION	65 % Cotton - 15 % Viscose - 13 % Polyester - 7 % Linen
WARP	TW005 Black polyester
NB OF WEFT COLOURS	3
WEFT	A - CCY TWINE / BLEACHED B - CCY CINNAMON / FFY GINGER C - CCY FAC BLACK
DESIGN WIDTH	142 cm / 55,90 inch
REPEAT	H: 14 cm - 5,51 inch V: 7 cm - 2,75 inch Straight repeat
WEIGHT	35 gr / ml
CARE	
INFORMATION	Natural fiber irregularity

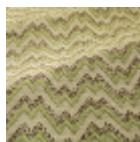
3 Colors



T0778001
Pale blue



T0778002
Ginger



T0778003
Leaf