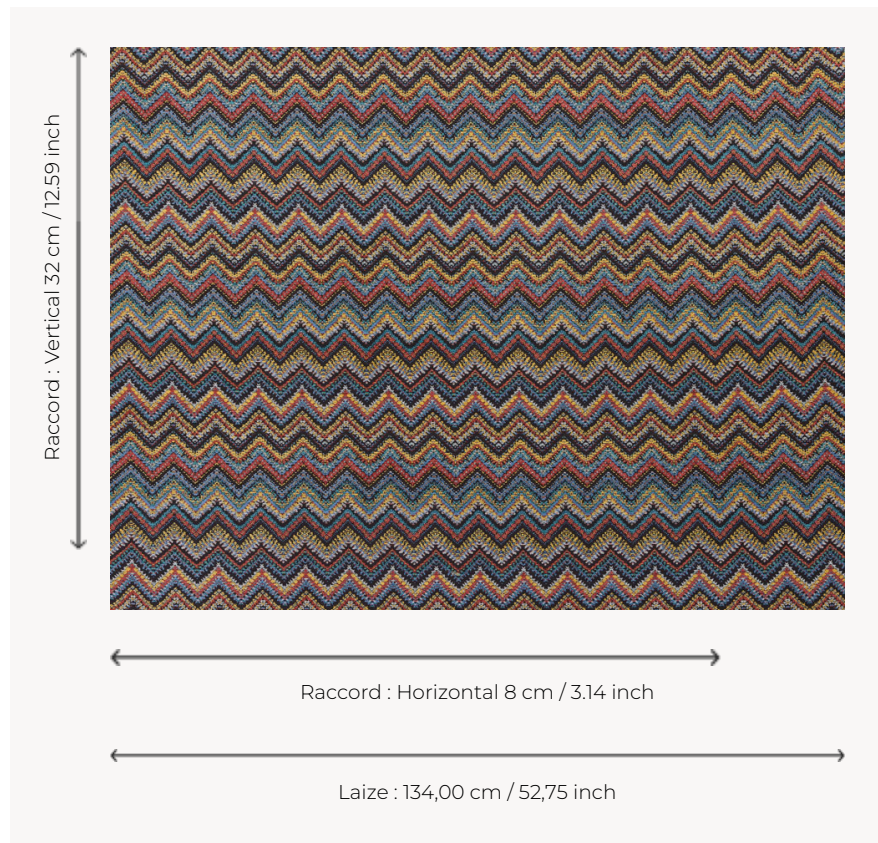


T0780001 ZIG ZAG TEXTURE

Internationally popular, the colorful chevron is a timeless pattern in textile art.

T0780001 - Teal



Thorp of London

TYPE	Chenille - Fibres douces - Jacquards
TECHNIQUE	Jacquard woven
SALES UNIT	Available per meter/yard
COMPOSITION	100 % Cotton
WARP	TW001 Black cotton
NB OF WEFT COLOURS	6
WEFT	A - CCY FAC BLACK B - CCY BLEACHED C - CFY GOLD D - CFY CORAL E - CFY TEAL F - CFY ROYAL
DESIGN WIDTH	134 cm / 52,75 inch
REPEAT	H: 8 cm - 3,14 inch V: 32 cm - 12,59 inch Straight repeat
WEIGHT	18 gr / ml
CARE	
INFORMATION	Motifs perpendicular to selvedge

3 Colors



T0780001
Teal



T0780002
Aubergine



T0780003
Navy