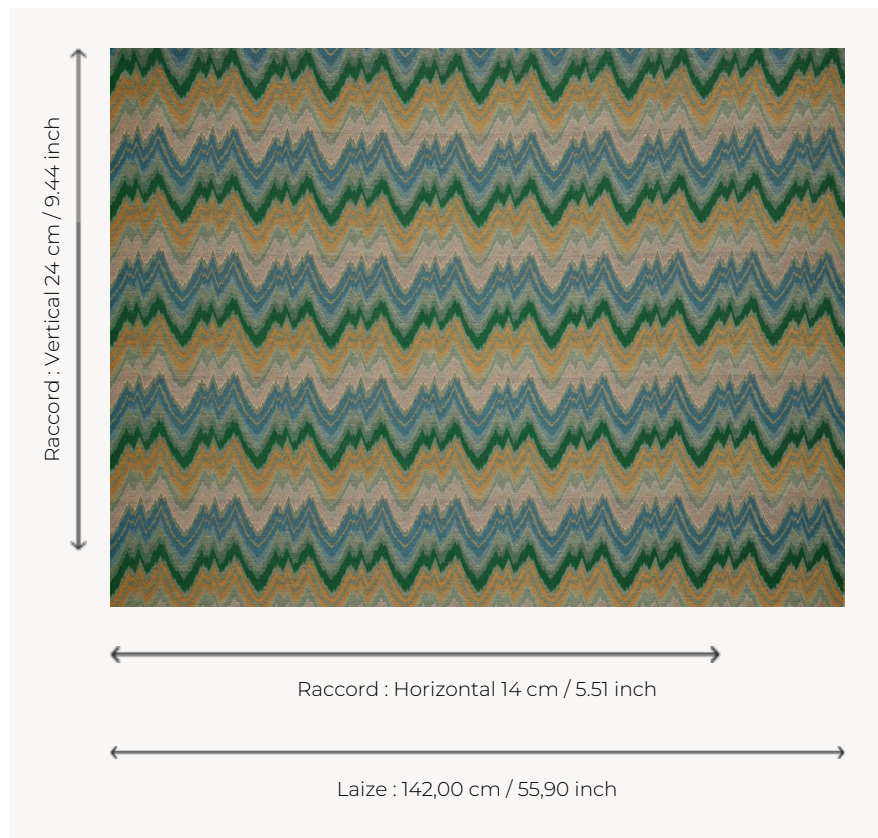


T0781002 FLAMESTITCH

FLAMESTITCH is a superb Hungarian stitch characteristic of the fashionable textiles from the reign of Louis XIII.

T0781002 - Hedge



Thorp of London

TYPE	Jacquards
TECHNIQUE	Jacquard woven
SALES UNIT	Available per meter/yard
COMPOSITION	39 % Viscose - 33 % Cotton - 17 % Linen - 11 % Polyester
WARP	TW005 Black polyester
NB OF WEFT COLOURS	5
WEFT	A - CCY IVY / LICHEN B - FFY TAUPE C - FFY SEABLUE D - FFY HEDGE E - CCY CINNAMON
DESIGN WIDTH	142 cm / 55,90 inch
REPEAT	H: 14 cm - 5,51 inch V: 24 cm - 9,44 inch Straight repeat
WEIGHT	653 gr / ml
CARE	
INFORMATION	Natural fiber irregularity

3 Colors



T0781001
Blackberry



T0781002
Hedge



T0781003
Sienna