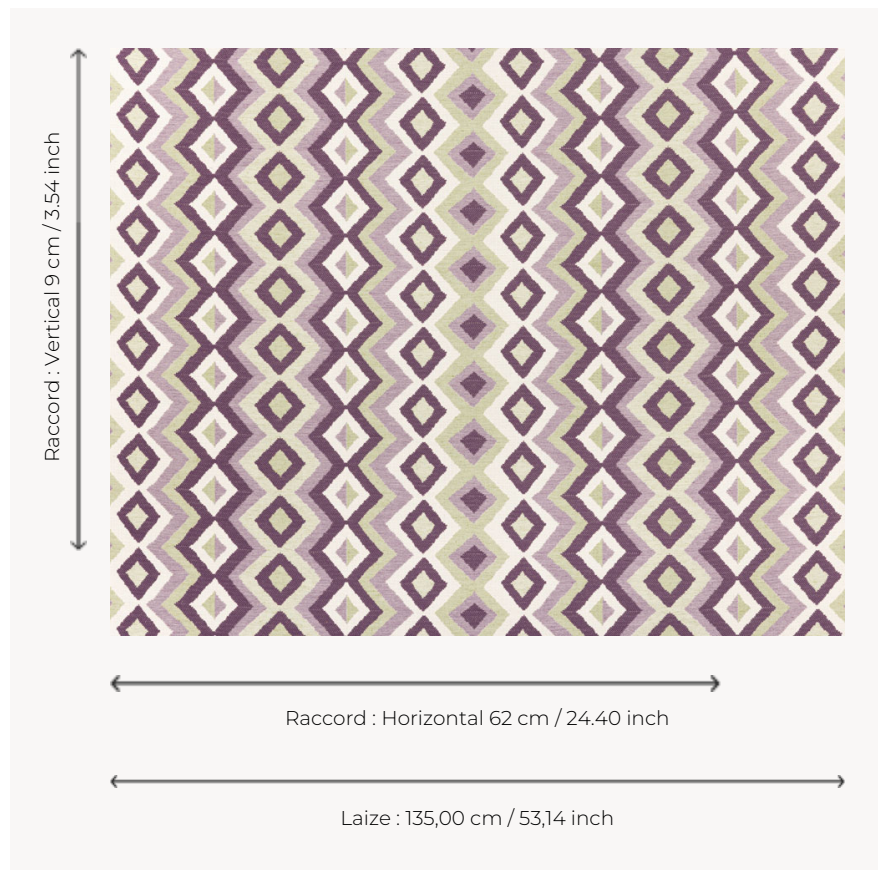


## T0786001 ZAMBIAN STRIPE COTTON

This jacquard with its large and colorful geometric pattern is inspired by traditional African kilims or weavings.

### T0786001 - Grape



### Thorp of London

<b>TYPE</b>	Jacquards
<b>TECHNIQUE</b>	Jacquard woven
<b>SALES UNIT</b>	Available per meter/yard
<b>COMPOSITION</b>	54 % Cotton - 34 % Viscose - 12 % Linen
<b>WARP</b>	TW002 Natural cotton
<b>NB OF WEFT COLOURS</b>	5
<b>WEFT</b>	A - ZRY VAUX / CCY MUSCAT B - ZRY IVOIRE C - CCY HONEY D - CCY GRAPE E - CCY GRAPE
<b>DESIGN WIDTH</b>	135 cm / 53,14 inch
<b>REPEAT</b>	H: 62 cm - 24,40 inch V: 9 cm - 3,54 inch Straight repeat
<b>WEIGHT</b>	28 gr / ml
<b>CARE</b>	
<b>INFORMATION</b>	Natural fiber irregularity

# 1 Colors



T0786001  
Grape