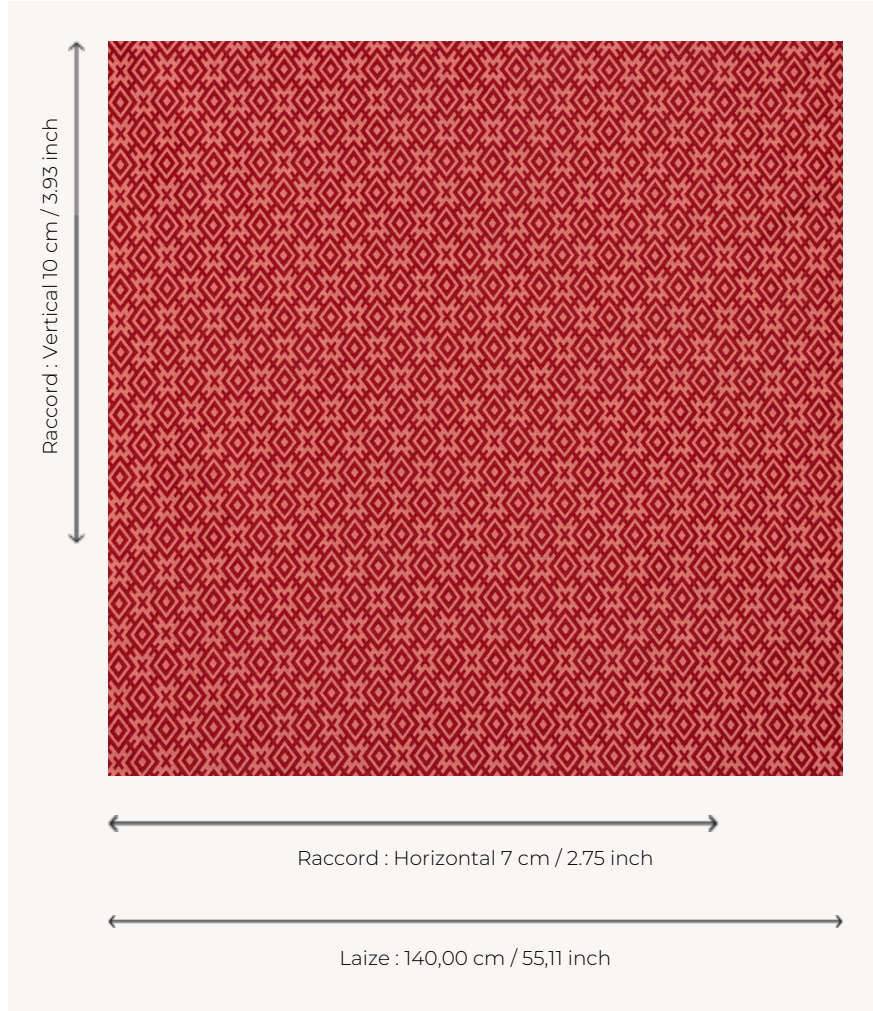


T0788002 LUNA DIAMOND

LUNA DIAMOND is a cheerful and ethnic-inspired jacquard, woven in contemporary neutral or bright colors.

T0788002 - Wild rose



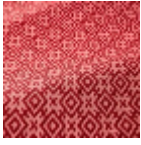
Thorp of London

TYPE	Jacquards
TECHNIQUE	Jacquard woven
SALES UNIT	Available per meter/yard
COMPOSITION	39 % Viscose - 32 % Cotton - 16 % Linen - 13 % Polyester
WARP	TW005 Black polyester
NB OF WEFT COLOURS	2
WEFT	A - CCY WILD ROSE B - FFY ROUGE
DESIGN WIDTH	140 cm / 55,11 inch
REPEAT	H: 7 cm - 2,75 inch V: 10 cm - 3,93 inch Straight repeat
WEIGHT	36 gr / ml
CARE	
NOTES	Reversible
INFORMATION	Natural fiber irregularity

4 Colors



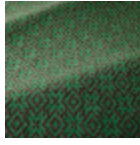
T0788001
Granary



T0788002
Wild rose



T0788003
Black & white



T0788004
Emerald