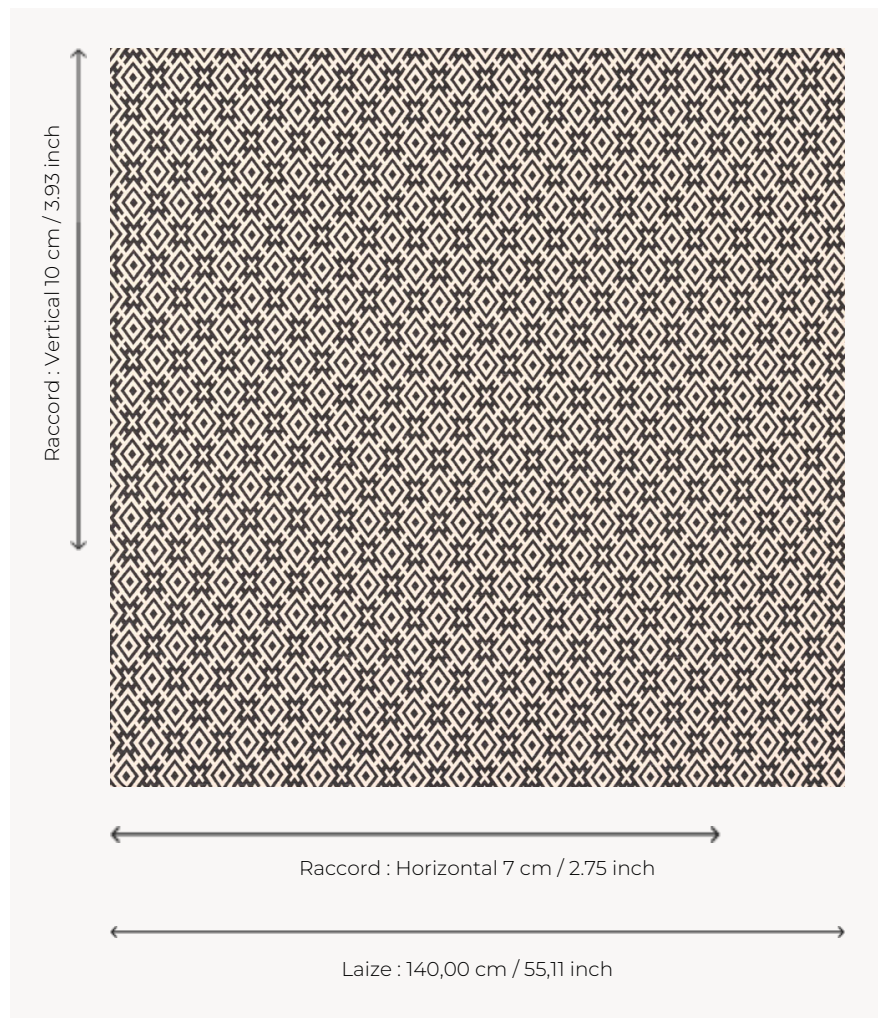


# T0788003 LUNA DIAMOND

LUNA DIAMOND is a cheerful and ethnic-inspired jacquard, woven in contemporary neutral or bright colors.

## T0788003 - Black & white



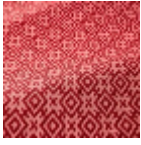
## Thorp of London

<b>TYPE</b>	Jacquards
<b>TECHNIQUE</b>	Jacquard woven
<b>SALES UNIT</b>	Available per meter/yard
<b>COMPOSITION</b>	39 % Viscose - 32 % Cotton - 16 % Linen - 13 % Polyester
<b>WARP</b>	TW006 White polyester
<b>NB OF WEFT COLOURS</b>	2
<b>WEFT</b>	A - CCY BLACK B - FFY BLEACHED
<b>DESIGN WIDTH</b>	140 cm / 55,11 inch
<b>REPEAT</b>	H: 7 cm - 2,75 inch V: 10 cm - 3,93 inch Straight repeat
<b>WEIGHT</b>	36 gr / ml
<b>CARE</b>	
<b>NOTES</b>	Reversible
<b>INFORMATION</b>	Natural fiber irregularity

## 4 Colors



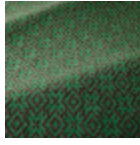
T0788001  
Granary



T0788002  
Wild rose



T0788003  
Black & white



T0788004  
Emerald