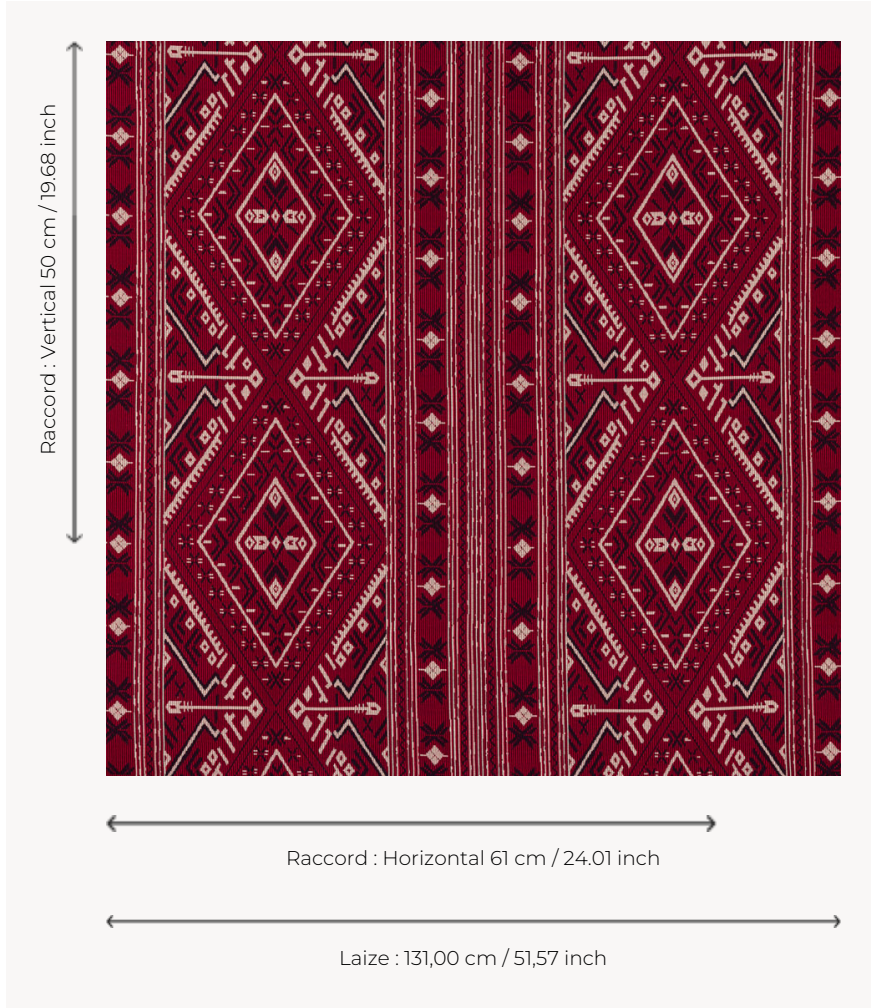


T0791001 NATIVE DIAMOND

This very beautiful jacquard is inspired by oriental kilims. The blend of cotton and wool gives it authenticity and enveloping softness.

T0791001 - Ruby



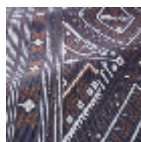
Thorp of London

TYPE	Jacquards
TECHNIQUE	Jacquard woven
SALES UNIT	Available per meter/yard
COMPOSITION	80 % Cotton - 20 % Wool
WARP	TW001 Black cotton
NB OF WEFT COLOURS	3
WEFT	A - WAY RUBY B - CCY MIDNIGHT C - CCY BLEACHED
DESIGN WIDTH	131 cm / 51,57 inch
REPEAT	H: 61 cm - 24,01 inch V: 50 cm - 19,68 inch
WEIGHT	33 gr / ml
CARE	
INFORMATION	Stripes parallel to selvages

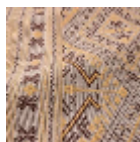
3 Colors



T0791001
Ruby



T0791002
Denim



T0791003
Mouse