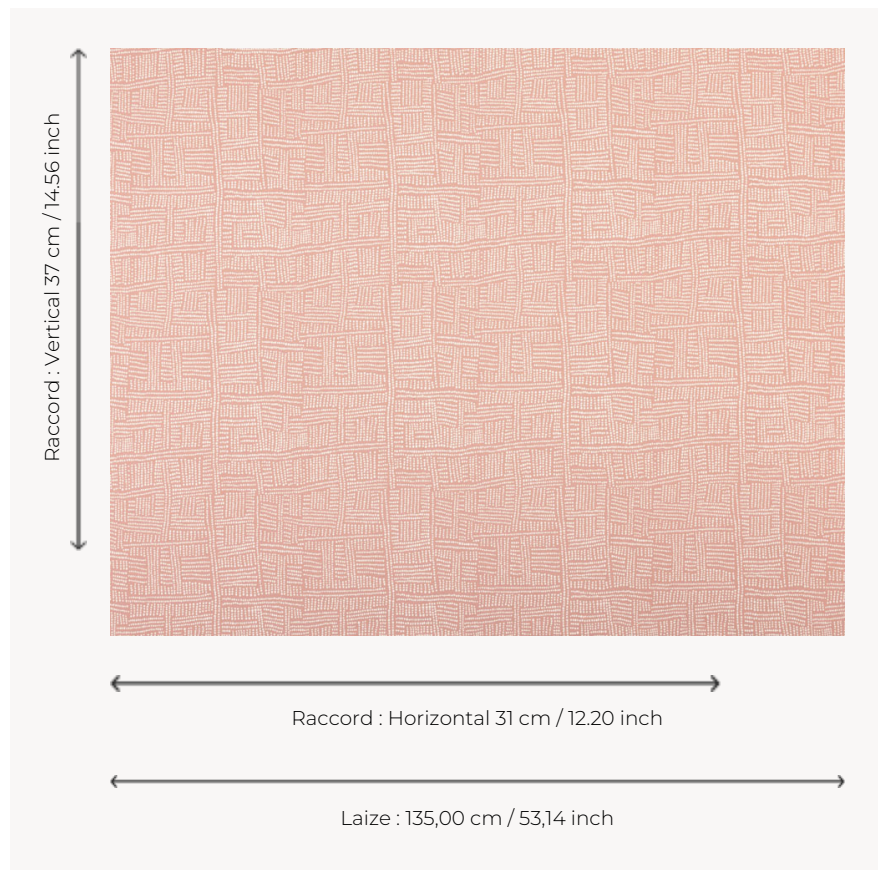


## T0811002 SPOT GRID

Echoing the most beautiful compositions of arboricultural art, this ethnic jacquard is made of a multitude of stitches.

### T0811002 - Carnation



### Thorp of London

<b>TYPE</b>	Jacquards
<b>TECHNIQUE</b>	Jacquard woven
<b>SALES UNIT</b>	Available per meter/yard
<b>COMPOSITION</b>	75 % Cotton - 19 % Viscose - 6 % Linen
<b>WARP</b>	TW003 Beige cotton
<b>NB OF WEFT COLOURS</b>	2
<b>WEFT</b>	A - CCY CARNATION B - CCY HONEY / FFY BLEACHED / CCY HONEY
<b>DESIGN WIDTH</b>	135 cm / 53,14 inch
<b>REPEAT</b>	H: 31 cm - 12,20 inch V: 37 cm - 14,56 inch Straight repeat
<b>WEIGHT</b>	34 gr / ml
<b>CARE</b>	
<b>NOTES</b>	Reversible
<b>INFORMATION</b>	Natural fiber irregularity

## 3 Colors



T0811001  
Aqua



T0811002  
Carnation



T0811003  
Cadmium