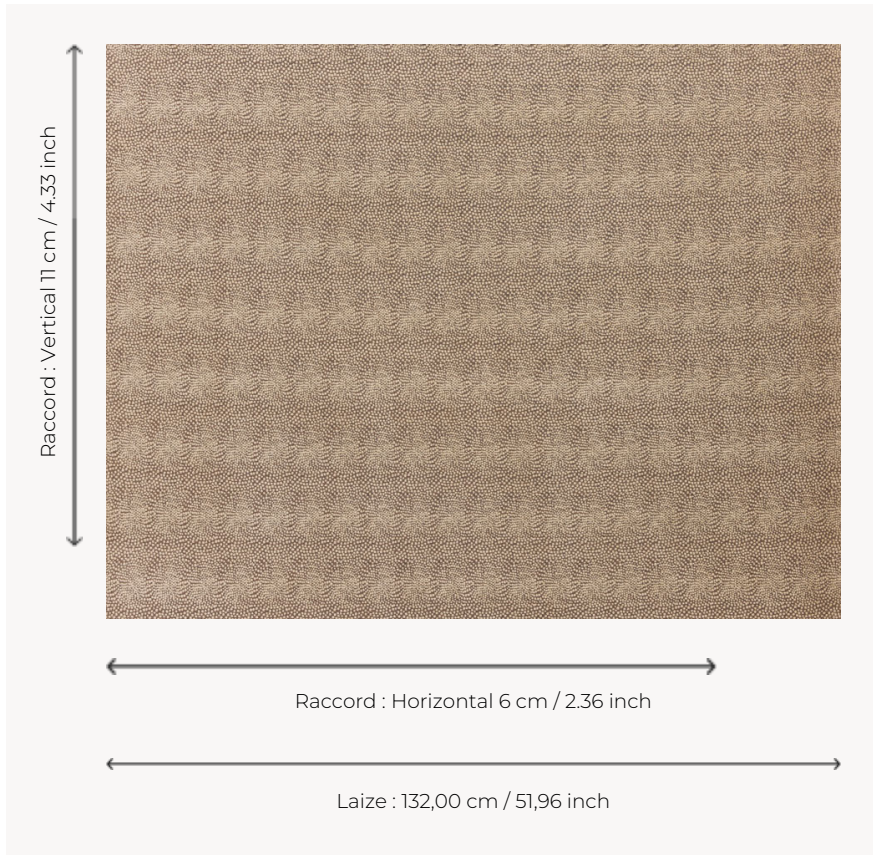



T0812004 BARKING

Like raindrops falling on a lake and drawing circles, the dotted pattern of this jacquard is an invitation to meditation.

T0812004 - Nutmeg



Thorp of London

TYPE	Chenille - Fibres douces - Jacquards
TECHNIQUE	Jacquard woven
SALES UNIT	Available per meter/yard
COMPOSITION	84 % Cotton - 11 % Viscose - 5 % Linen
WARP	TW001 Black cotton
NB OF WEFT COLOURS	2
WEFT	A - CCY MUSHROOM / FFY NUTMEG B - CFY WHEAT
DESIGN WIDTH	132 cm / 51,96 inch
REPEAT	H: 6 cm - 2,36 inch V: 11 cm - 4,33 inch Straight repeat
WEIGHT	28 gr / ml
CARE	
NOTES	Reversible
INFORMATION	Natural fiber irregularity

4 Colors



T0812001
Emerald



T0812002
Kingfisher



T0812003
Pink



T0812004
Nutmeg