

BP344001 LE PARADIS AUX MILLE FLEURS

LE PARADIS AUX MILLE FLEURS is a sumptuous tree of life that is printed on grasscloth. The drawing is an extract from a plate entitled "dessins chinois" ["Chinese drawings"] created by Jean-Antoine Fraisse in the 18th century for the Duc de Bourbon's factories. The masterpiece is currently preserved at the Condé Museum in Chantilly. This panoramic piece is sidematched for a limitless effect.

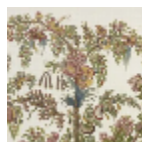
BP344001 - Multicolore



Braquenié

| | |
|-------------------------|--|
| TYPE | Small width printed wallpapers - Straws and similar materials - Panoramic wallpapers |
| SALES UNIT | Available per panel |
| BACKING | NON WOVEN |
| COMPOSITION | 100 % Straw |
| WIDTH | 75 cm / 29,52 inch |
| REPEAT | H: 150 cm - 59,00 inch V: 350 cm - 137,79 inch Straight repeat |
| WEIGHT | 214 gr / m² |
| CARE | |
| TRIMMING | Trimmed |
| HANGING/REMOVING | Paste the wall Strippable |
| CERTIFICATIONS | EUROCLASS B-s1,d0 |
| NOTES | Sold as a complete artwork |
| INFORMATION | Inherent irregularities from the natural fiber 1 roll = 2 panels |

1 Colors



BP344001
Multicolore