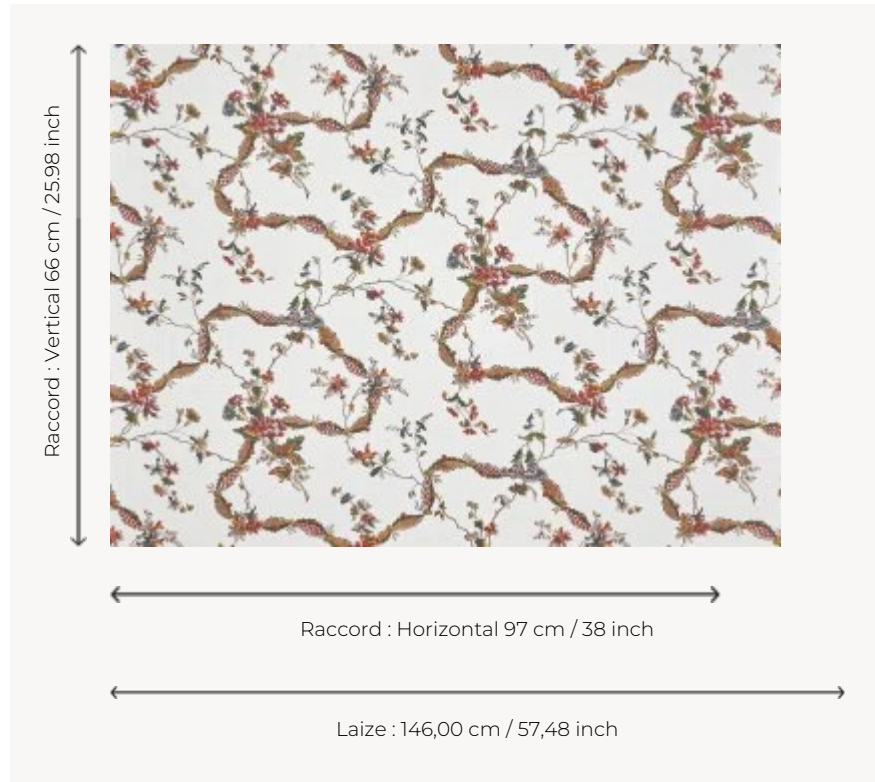



BP355001 MIRANDE

This wallpaper, decorated with ribbons delicately intertwined with flowers, is a reinterpretation of a canvas printed with the block printing technique around 1789 by the Woolmer Collins factory in England, preserved in the Maison archives. It is printed on a lightly satin-finished non-woven backing.

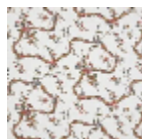
BP355001 - Fragrance



Braquenié

TYPE	Wide width printed wallpapers
SALES UNIT	Available per meter/yard
BACKING	NON WOVEN
COMPOSITION	-
WIDTH	146 cm / 57,48 inch
REPEAT	H: 97 cm - 38,00 inch V: 66 cm - 25,98 inch Half drop repeat
WEIGHT	160 gr / m ²
CARE	
TRIMMING	Pretrimmed
HANGING/REMOVING	Paste the wall Wet removable
CERTIFICATIONS	EUROCLASS C-s1,d0 ASTM E84 Class A
NOTES	Good lightfastness Flame retardant backing
INFORMATION	Use the trim & join marks during installation. Double-cut installation.
BOOK	B9979PPBRAQ9

1 Colors



BP355001
Fragrance