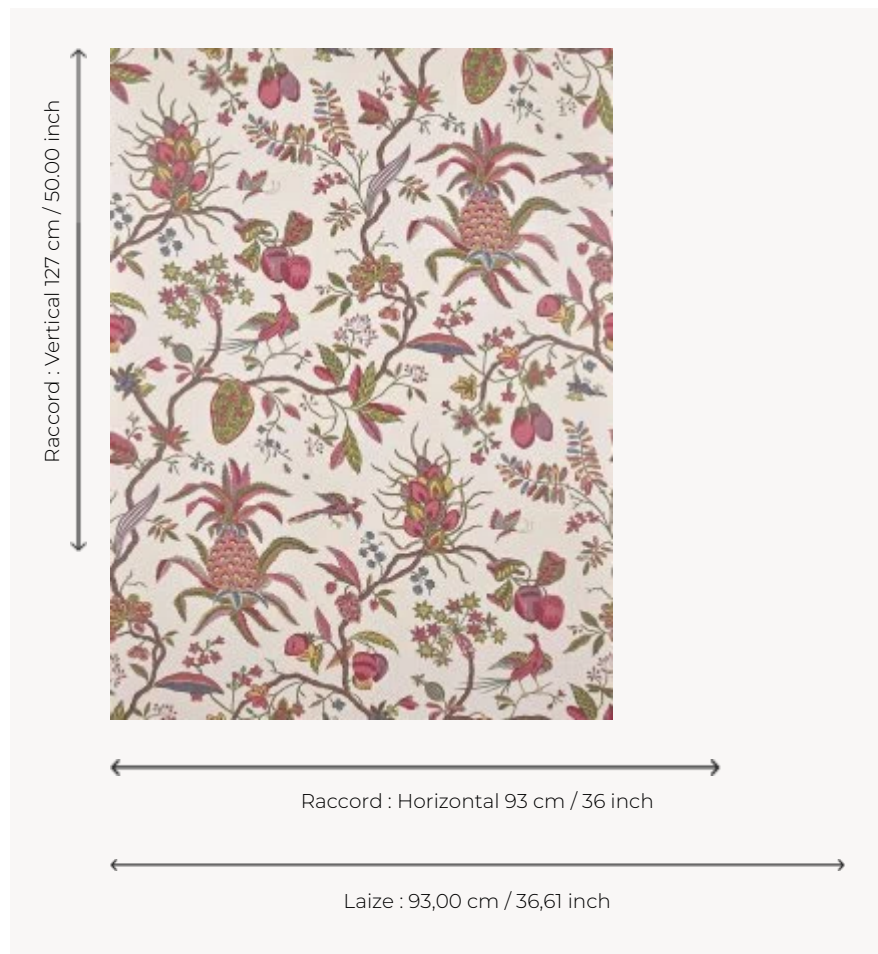


## BP372001 PETITS APPARTEMENTS DE LA REINE

This superb drawing with a large motif of flowering branches and pineapple reproduces a printed canvas called "l'Ananas", kept in the Musée de la Toile de Jouy. Originally printed with the block printing technique around 1777 by the Manufacture Royale d'Oberkampf, this pattern was used for furniture. Its coordinated fabric was chosen for the renovation of the small apartments of the Queen at the Palace of Versailles.

### BP372001 - Jouy



### Braquenié

**TYPE** Wide width printed wallpapers

**COLLABORATION** Musée de la Toile de Jouy

**SALES UNIT** Available per meter/yard

**BACKING** NON WOVEN

**COMPOSITION** -

**WIDTH** 93 cm / 36,61 inch

**REPEAT** H: 93 cm - 36,00 inch  
V: 127 cm - 50,00 inch  
Straight repeat

**WEIGHT** 185 gr / m<sup>2</sup>

**CARE** 

**TRIMMING** Pretrimmed

**HANGING/REMOVING** Paste the wall  
Strippable

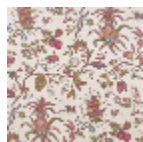
**CERTIFICATIONS** EUROCLASS B-s1,d0  
ASTM E84 Class A

**NOTES** Good lightfastness  
Flame retardant backing

**INFORMATION** Use the trim & join marks during installation. Double-cut installation.

**BOOK** B9979PPBRAQ9

1 Colors



BP372001

Jouy