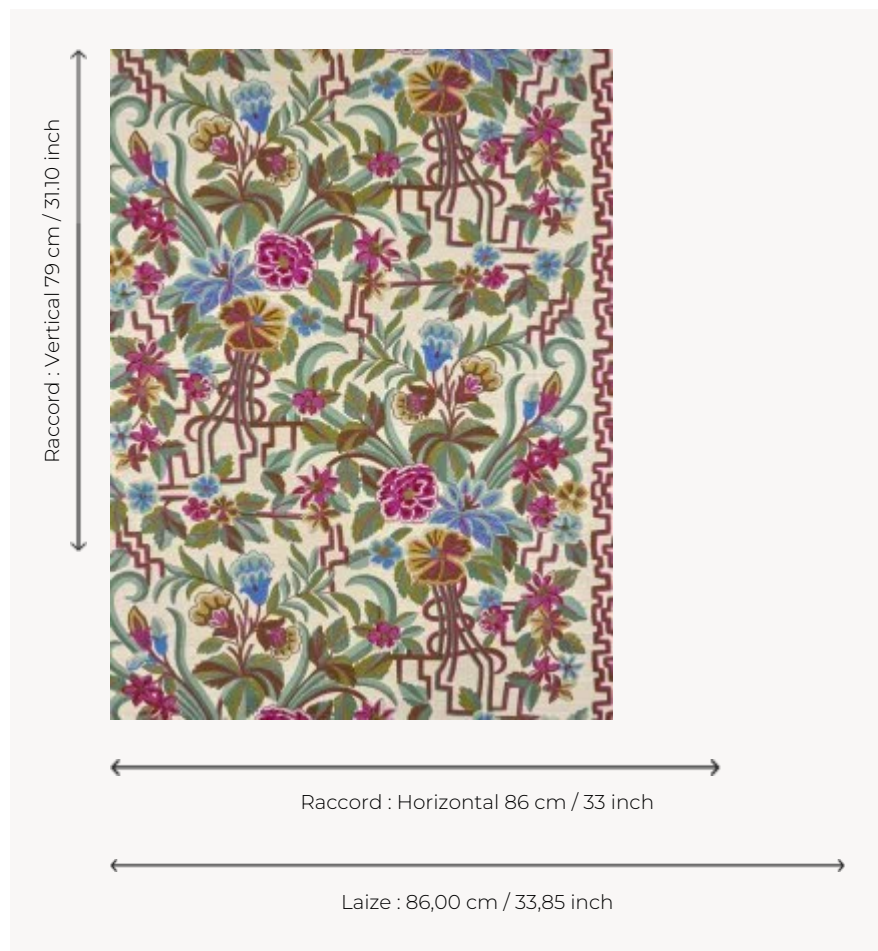


## FP043001 HANA

A Japanese name meaning "flower". Embroidered on straw, this Asian-inspired design is full of flowers originally found on a black wool jacket embroidered in chain stitch in India and kept in the House's archives. By juxtaposing the panels, a border of flowers appears, reminiscent of a kakemono.

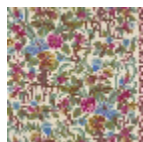
### FP043001 - Bougainvillier



### Pierre Frey

<b>TYPE</b>	Embossed patterns - Straws and similar materials - Embroideries
<b>SALES UNIT</b>	Available per roll of 7,20 mts
<b>BACKING</b>	PAPER
<b>COMPOSITION</b>	38 % Viscose - 30 % Polyester - 23 % Straw - 9 % Cotton
<b>WIDTH</b>	86 cm / 33,85 inch
<b>REPEAT</b>	H: 86 cm - 33,00 inch V: 79 cm - 31,10 inch Free match
<b>WEIGHT</b>	715 gr / m <sup>2</sup>
<b>CARE</b>	
<b>TRIMMING</b>	Trimmed
<b>HANGING/REMOVING</b>	Paste the wall Dry strippable
<b>NOTES</b>	Raised pattern
<b>INFORMATION</b>	Panel effect Embroidered wallcovering. Irregular appearance due to handcrafting
<b>BOOK</b>	F9979PPFREY44

## 2 Colors



FP043001  
Bougainvillier



FP043002  
Menthe