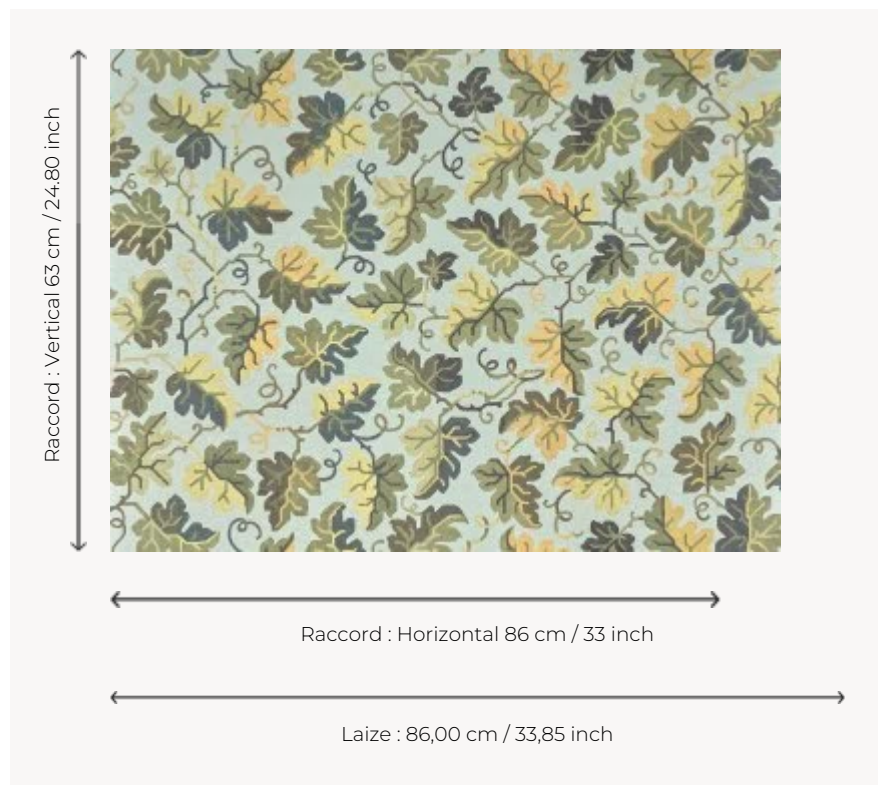



## FP106002 HEDERA

A stylised ivy pattern covering the wall of vegetation. This timeless yet singular design is taken from a map dating from the 1950s, kept in the Maison's heritage collection. HEDERA is printed on a woven textile and laminated to a non-woven backing.

### FP106002 - Celadon



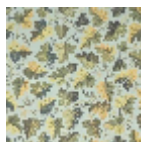
### Pierre Frey

<b>TYPE</b>	Straws and similar materials - Printed wallpapers
<b>SALES UNIT</b>	Available per meter/yard
<b>BACKING</b>	NON WOVEN
<b>COMPOSITION</b>	100 % Paper
<b>WIDTH</b>	86 cm / 33,85 inch
<b>REPEAT</b>	H: 86 cm - 33,00 inch V: 63 cm - 24,80 inch Half drop repeat
<b>WEIGHT</b>	240 gr / m <sup>2</sup>
<b>CARE</b>	
<b>TRIMMING</b>	Trimmed
<b>HANGING/REMOVING</b>	Paste the wall Strippable
<b>BOOK</b>	F9979PPFREY46

## 2 Colors



FP106001  
Lichen



FP106002  
Celadon