

FP230001 PRIMADONNA

Discovered during a visit to Stockholm, this motif of bird-inhabited trees, printed and hand-painted on 18th-century planed paper, is a Swedish creation inspired by Chinese models imported at the time. Installed with flat-headed nails ("à la broquette"), It is still in place in the Swedish Drottningholms Slottsteater. Dating from the 18th century, this theater is adjacent to the Royal Palace, often called the Swedish Petit-Versailles.

FP230001 - PRINTEMPS


Raccord : Vertical 135 cm / 53,14 inch



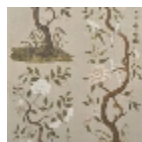
Raccord : Horizontal 87 cm / 34 inch

Laize : 87,00 cm / 34,25 inch

Pierre Frey

TYPE	Straws and similar materials - Printed wallpapers
SALES UNIT	Available per meter/yard
BACKING	NON WOVEN
COMPOSITION	100 % Paper
WIDTH	87 cm / 34,25 inch
REPEAT	H: 87 cm - 34,00 inch V: 135 cm - 53,14 inch Straight repeat
WEIGHT	240 gr / m²
CARE	
TRIMMING	Trimmed
HANGING/REMOVING	Paste the wall Wet removable

1 Colors



FP230001
PRINTEMPS