



FP241001 LA VALLEE DES DRAGONS

The Mongolian desert is evoked here with a simplified, abstract line. LA VALLÉE DES DRAGONS is printed in 3D ink on sisal laminated to a natural-colored non-woven, giving it a singular volume and light reflection. Available in coordinating fabric.

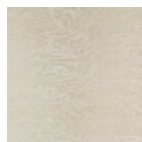
FP241001 - BLE



Pierre Frey

TYPE	Straws and similar materials - Printed wallpapers
SALES UNIT	Available per meter/yard
BACKING	NON WOVEN
COMPOSITION	100 % Straw
WIDTH	87 cm / 34,25 inch
REPEAT	H: 43 cm - 16,00 inch V: 62 cm - 24,40 inch Straight repeat
WEIGHT	370 gr / m ²
CARE	
TRIMMING	Trimmed
HANGING/REMOVING	Paste the wall Wet removable
CERTIFICATIONS	EUROCLASS C-s1,d0 ASTM E84 Class A
INFORMATION	Panel effect Inherent irregularities from the natural fiber

1 Colors



FP241001
BLE