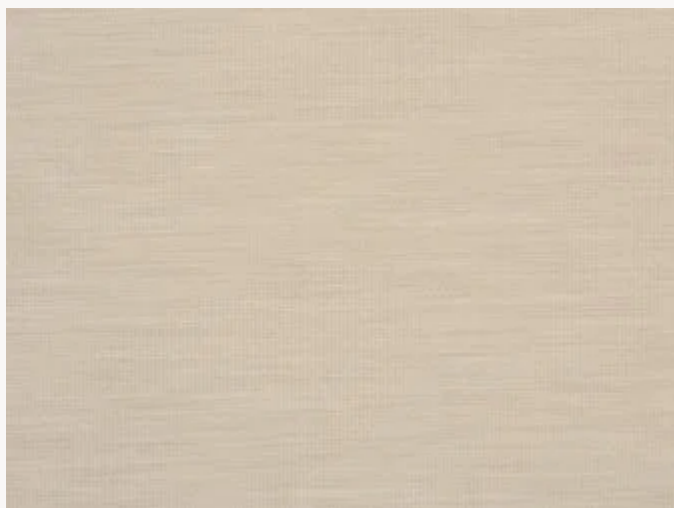




## FP467002 DORSET


In line with the previous GRAMINEES collections, and echoing the NATECRU collection of woven textiles, Pierre Frey presents a collection of wallcoverings inspired by nature, imitating straw weaves. White, natural or unbleached colors are associated in a resolutely contemporary way.

### FP467002 - Camel



Laize : 135,00 cm / 53,14 inch

### Pierre Frey

TYPE	Plains & semi plains - Paperbacked fabrics
SALES UNIT	Available per meter/yard
BACKING	NON WOVEN
COMPOSITION	54 % Wool - 46 % Polyester
WIDTH	135 cm / 53,14 inch
REPEAT	Free match
WEIGHT	375 gr / m <sup>2</sup>
CARE	
TRIMMING	Trimmed
HANGING/REMOVING	Paste the wall Strippable
CERTIFICATIONS	ASTM E84 Class A

## 1 Colors



FP467002

Camel