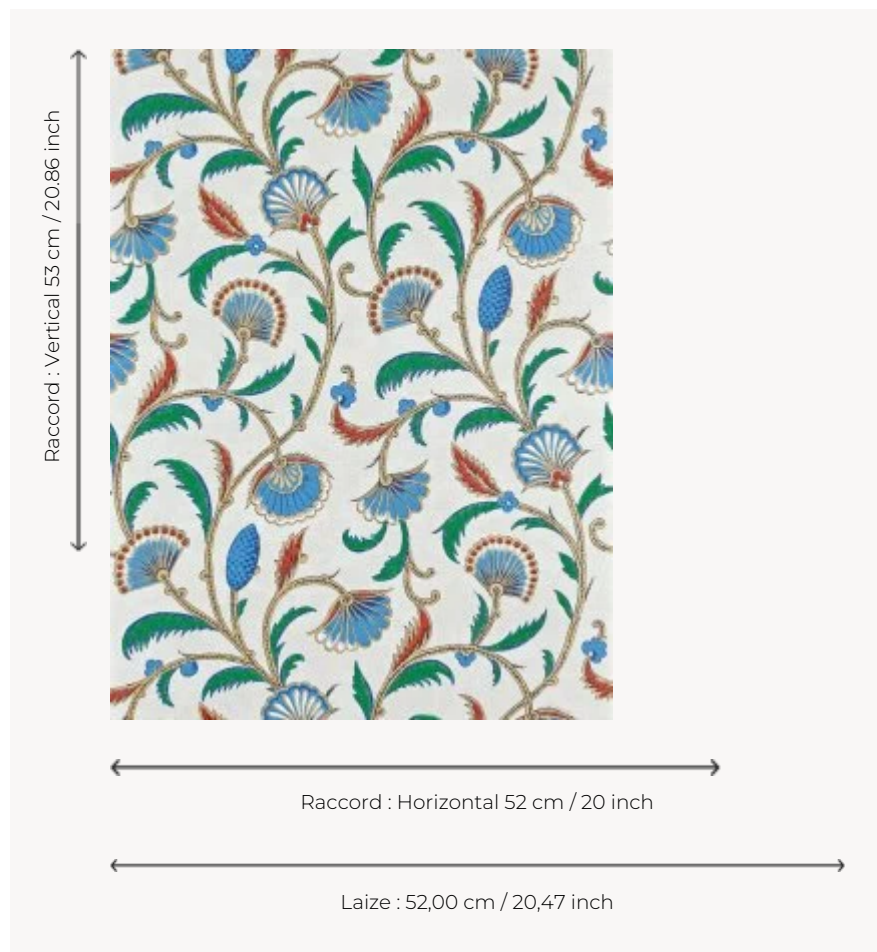



## FP618001 SHEHERAZADE

With floral arabesques, like a jewel carried by the storyteller of a Thousand and One Nights, this wallpaper reproduces a gouache from the second half of the 19th century, preserved in the archives of the Maison Pierre Frey. Traditional surface printing gives it a hand-painted look, highlighting every detail of the design.

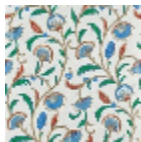
### FP618001 - Iznik



### Pierre Frey

<b>TYPE</b>	Small width printed wallpapers
<b>SALES UNIT</b>	Available per roll of 10,05 m / 11 yards
<b>BACKING</b>	NON WOVEN
<b>COMPOSITION</b>	-
<b>WIDTH</b>	52 cm / 20,47 inch
<b>REPEAT</b>	H: 52 cm - 20,00 inch V: 53 cm - 20,86 inch Straight repeat
<b>WEIGHT</b>	175 gr / m <sup>2</sup>
<b>CARE</b>	
<b>TRIMMING</b>	Trimmed
<b>HANGING/REMOVING</b>	Paste the wall Strippable
<b>CERTIFICATIONS</b>	EUROCLASS B-s1,d0 ASTM E84 Class A
<b>NOTES</b>	Good lightfastness Flame retardant backing Traditional printing technique

5 Colors



FP618001  
Iznik



FP618002  
Emeraude



FP618003  
Soleil



FP618004  
Roseindien



FP618005  
Bisque