

## FP863012 SOFIA


SOFIA, a wallcovering with an elegant relief and a subtle geometric pattern, woven in our workshops in northern France. In order to offer a new refined plain to decorate walls, Pierre Frey has rigorously chosen and combined a mixture of fibers. Laminated on a high quality non-woven backing, SOFIA is scraped with a matte ink and is available in 15 shades. A panel effect gives it a very natural look.

### FP863012 - Lichen

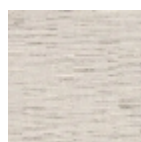


Laize : 130,00 cm / 51,18 inch

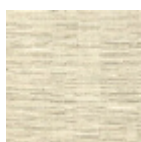
### Pierre Frey

<b>TYPE</b>	Plains & semi plains - Paperbacked fabrics
<b>SALES UNIT</b>	Available per meter/yard
<b>BACKING</b>	NON WOVEN
<b>COMPOSITION</b>	44 % Linen - 32 % Cotton - 17 % Acrylic - 6 % Polyester
<b>WIDTH</b>	130 cm / 51,18 inch
<b>REPEAT</b>	Free match
<b>WEIGHT</b>	490 gr / m <sup>2</sup>
<b>CARE</b>	
<b>TRIMMING</b>	Trimmed
<b>HANGING/REMOVING</b>	Paste the wall Wet removable
<b>CERTIFICATIONS</b>	ASTM E84 Class A
<b>INFORMATION</b>	Panel effect
<b>BOOK</b>	F9979PPFREY39

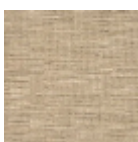
# 15 Colors



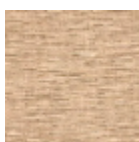
FP863001  
Calcaire



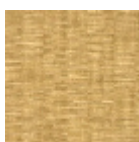
FP863002  
Perle



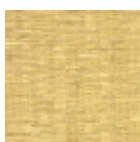
FP863003  
Craie



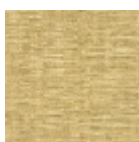
FP863004  
Saumon



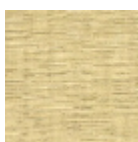
FP863006  
Paille



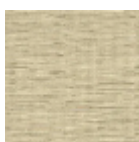
FP863007  
Ble



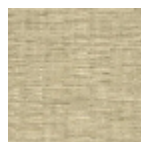
FP863008  
Orge



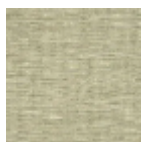
FP863009  
Travertin



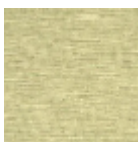
FP863010  
Sable



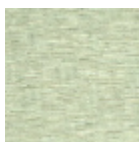
FP863011  
Corde



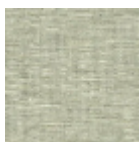
FP863012  
Lichen



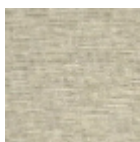
FP863013  
Citrus



FP863014  
Opale



FP863015  
Celadon



FP863016  
Galet