



## FP865004 MARIUS

Laminated on non-woven, MARIUS is a beautiful plain raffia inspired by the traditional straw mats of southern France. Its satin finish and lacquer sheen bring a modernity to its sophisticated and delicate color range.

### FP865004 - Sable



Laize : 128,00 cm / 50,39 inch

### Pierre Frey

<b>TYPE</b>	Plains & semi plains - Paperbacked fabrics
<b>SALES UNIT</b>	Available per meter/yard
<b>BACKING</b>	NON WOVEN
<b>COMPOSITION</b>	57 % Polyamide - 43 % Cotton
<b>WIDTH</b>	128 cm / 50,39 inch
<b>WEIGHT</b>	390 gr / m <sup>2</sup>
<b>CARE</b>	
<b>TRIMMING</b>	Trimmed
<b>HANGING/REMOVING</b>	Paste the wall Dry strippable
<b>BOOK</b>	F9979PPFREY34

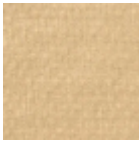
# 10 Colors



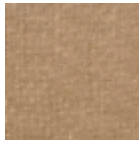
FP865001  
Nacre



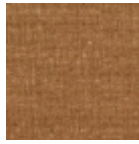
FP865002  
Chaux



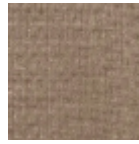
FP865003  
Osier



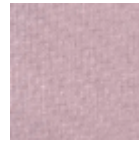
FP865004  
Sable



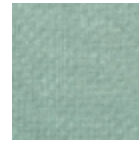
FP865005  
Savane



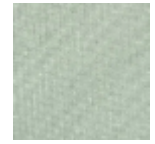
FP865006  
Ecorce



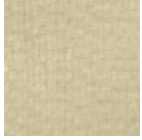
FP865008  
Ballerine



FP865009  
Aquatique



FP865010  
Amande



FP865011  
Mastic