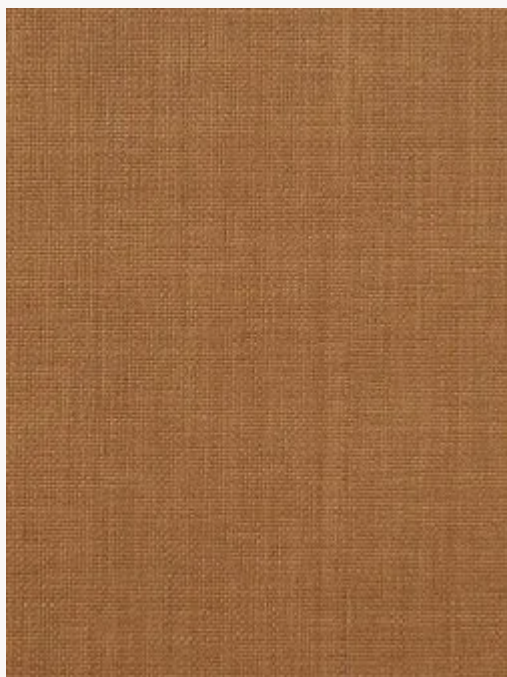




FP865005 MARIUS


Laminated on non-woven, MARIUS is a beautiful plain raffia inspired by the traditional straw mats of southern France. Its satin finish and lacquer sheen bring a modernity to its sophisticated and delicate color range.

FP865005 - Savane



Laize : 128,00 cm / 50,39 inch

Pierre Frey

TYPE	Plains & semi plains - Paperbacked fabrics
SALES UNIT	Available per meter/yard
BACKING	NON WOVEN
COMPOSITION	57 % Polyamide - 43 % Cotton
WIDTH	128 cm / 50,39 inch
WEIGHT	390 gr / m ²
CARE	
TRIMMING	Trimmed
HANGING/REMOVING	Paste the wall Dry strippable
BOOK	F9979PPFREY34

8 Colors



FP865001
Nacre



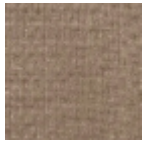
FP865003
Osier



FP865004
Sable



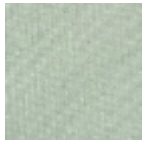
FP865005
Savane



FP865006
Ecorce



FP865009
Aquatique



FP865010
Amande



FP865011
Mastic