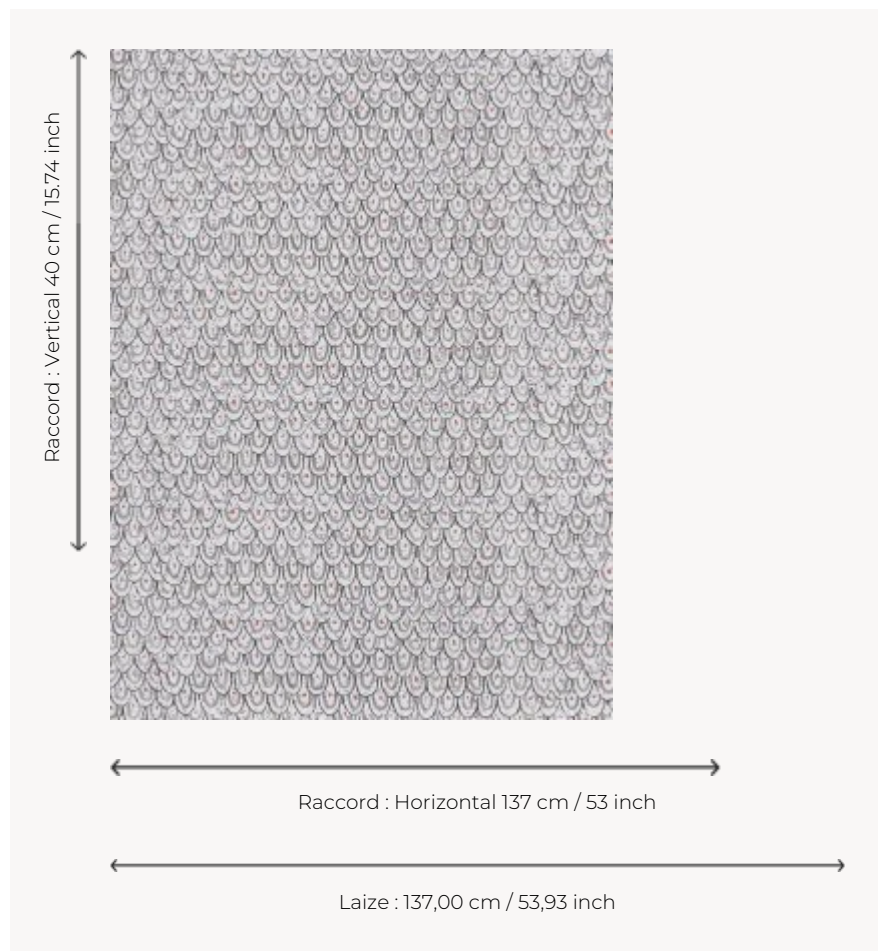



# FP883001 SHOUT

Thanks to its hand-painted pattern, the SHOUT wallpaper is reminiscent of the pearl nets worn by women in ancient Egypt. This decoration is inspired by the statue La Porteuse d'auge kept in the Louvre's Department of Egyptian Antiquities. Printed in wide width on matte non-woven fabric.

## FP883001 - Greige



## Pierre Frey

<b>TYPE</b>	Wide width printed wallpapers
<b>COLLABORATION</b>	Musée du Louvre
<b>SALES UNIT</b>	Available per meter/yard
<b>BACKING</b>	NON WOVEN
<b>COMPOSITION</b>	-
<b>WIDTH</b>	137 cm / 53,93 inch
<b>REPEAT</b>	H: 137 cm - 53,00 inch V: 40 cm - 15,74 inch Straight repeat
<b>WEIGHT</b>	147 gr / m <sup>2</sup>
<b>CARE</b>	
<b>TRIMMING</b>	Pretrimmed
<b>HANGING/REMOVING</b>	Paste the wall Wet removable
<b>CERTIFICATIONS</b>	EUROCLASS B-s1,d0 ASTM E84 Class A
<b>NOTES</b>	Flame retardant backing
<b>INFORMATION</b>	Use the trim & join marks during installation. Double-cut installation.
<b>BOOK</b>	F9979PPFREY32 F9979PPFREY37

### 3 Colors



FP883001  
Greige



FP883002  
Ciel



FP883003  
Algue