

**TEST REPORT NO: 155843**

Date: 12 July 2019

**PIERRE FREY SAS  
47 RUE DES PETITS CHAMPS  
75001 PARIS  
FRANCE**

The following sample(s) was/were submitted and identified by/on behalf of the client as:

Retailer	Not Specified
Description of article	F3394 - GAOU BROWN/CREAM FABRIC
Retailer style number	BROWN/CREAM
Retailer Standard Number	UNKNOWN
Order No./ Buyer	2063744
Quality/Fibre Composition	96% DRALON 4% PA
Date Sample(s) Received:	3 July 2019

Tests	Pass	Fail	Remarks
BS5852 Part 1 Ignition Source 0	X		
BS5852 Part 1 Ignition Source 1		X	
BS EN 1021-1	X		
BS EN 1021-2		X	
BS5852 Crib 5			To follow

Signature



**Lucy Peberdy Technologist**

For and on behalf of  
SGS United Kingdom Ltd

All samples are conditioned to ISO 139 where conditioning is required (unless otherwise stated)

This document is issued by the Company under its General Conditions of Service accessible at [www.sgs.com/terms\\_and\\_conditions.htm](http://www.sgs.com/terms_and_conditions.htm) and, for electronic format documents, subject to Terms and Conditions for Electronic Documents at <http://www.sgs.com/en/Terms-and-Conditions.aspx>. Attention is drawn to the limitation of liability, indemnification and jurisdiction issues defined therein. Any holder of this document is advised that information contained hereon reflects the Company's findings at the time of its intervention only and within the limits of Client's instructions, if any. The Company's sole responsibility is to its Client and this document does not exonerate parties to a transaction from exercising all their rights and obligations under the transaction documents. This document cannot be reproduced except in full, without prior written approval of the Company. Any unauthorized alteration, forgery or falsification of the content or appearance of this document is unlawful and offenders may be prosecuted to the fullest extent of the law." Unless otherwise stated the results shown in this test report refer only to the sample(s) tested and such sample(s) are retained for 30 days only

Customer: **PIERRE FREY SAS** Test Report No: **155843**

**Test Results**

**BS 5852: Part 1: 1979**  
**Methods of test for the ignitability by smokers' materials of upholstered composites for seating.**

**Test Requested**

The test specimen supplied is woven and has been tested using ignition sources 0 and 1 using the following test method BS 5852: Part 1: 1979.

**Fibre Identification**

Stated Fibre Composition: 96% Dralon 41% PA

**Conditioning**

The materials to be tested and cigarettes were conditioned immediately before the test for 72 hours in an indoor ambient condition and then for at least 16 hours in an atmosphere having a temperature of  $20 \pm 5^{\circ}\text{C}$  and a relative humidity of  $50 \pm 20\%$ .

**Comments of Test Results**

The test specimen meets the requirements of clause 9 from BS 5852: Part 1: 1979 using ignition source 0.

The test specimen does not meet the requirements of clause 9 from BS 5852: Part 1: 1979 using ignition source 1, due to flaming ignition.

**Results**

'The following tests results relate only to the ignitability of the combination of materials under the particular conditions of test; they are not intended as a means of assessing the full potential fire hazard of the materials in use'

This document is issued by the Company under its General Conditions of Service accessible at [www.sgs.com/terms\\_and\\_conditions.htm](http://www.sgs.com/terms_and_conditions.htm) and, for electronic format documents, subject to Terms and Conditions for Electronic Documents at <http://www.sgs.com/en/Terms-and-Conditions.aspx>. Attention is drawn to the limitation of liability, indemnification and jurisdiction issues defined therein. Any holder of this document is advised that information contained hereon reflects the Company's findings at the time of its intervention only and within the limits of Client's instructions, if any. The Company's sole responsibility is to its Client and this document does not exonerate parties to a transaction from exercising all their rights and obligations under the transaction documents. This document cannot be reproduced except in full, without prior written approval of the Company. Any unauthorized alteration, forgery or falsification of the content or appearance of this document is unlawful and offenders may be prosecuted to the fullest extent of the law." Unless otherwise stated the results shown in this test report refer only to the sample(s) tested and such sample(s) are retained for 90 days only

**Customer:** PIERRE FREY SAS      **Test Report No:** 155843

**Test Results**

Two cigarettes are placed along the junction between the horizontal and vertical test pieces in accordance with Clause 9.2.2. No progressive smouldering or flaming is to be observed within 1 hour of placement of the cigarette (Clause 9.2.4).

The Cigarette Test		
	Cigarette 1	Cigarette 2
Clause 9.2.3 Evidence of Progressive Smouldering/ Flaming or Afterglow.	No	No
Cover Splitting	Yes	Yes
Clause 9.4 Any Internal Progressive Smouldering during the Final Examination	No	No
<b>Test Result</b>	<b>Pass</b>	<b>Pass</b>

A butane flame is applied at the junction between the horizontal and vertical test pieces for a period 20 ± 1 second in accordance with clause 9.3.2. No Flaming or Progressive Smouldering is to be observed after 2 minutes of the removal of the burner tube (Clause 9.3.4).

The Match Test	
Match 1	
Clause 9.3.4 Evidence of Flaming/ Progressive Smouldering/ Afterglow or Smoking	Yes - Flaming
Cover Splitting	Yes
Clause 9.4 Any Internal Progressive Smouldering during the Final Examination	N/A
<b>Test Result</b>	<b>Fail</b>

Smouldering Cigarette test and the match test were carried out over Non-Fire Retardant Polyurethane Foam Density of 20-22 Kg per m<sup>3</sup>.

The face of the fabric was tested.

The test specimen was extinguished due to flaming being greater than 120 seconds.

This document is issued by the Company under its General Conditions of Service accessible at [www.sgs.com/terms\\_and\\_conditions.htm](http://www.sgs.com/terms_and_conditions.htm) and, for electronic format documents, subject to Terms and Conditions for Electronic Documents at <http://www.sgs.com/en/Terms-and-Conditions.aspx>. Attention is drawn to the limitation of liability, indemnification and jurisdiction issues defined therein. Any holder of this document is advised that information contained hereon reflects the Company's findings at the time of its intervention only and within the limits of Client's instructions, if any. The Company's sole responsibility is to its Client and this document does not exonerate parties to a transaction from exercising all their rights and obligations under the transaction documents. This document cannot be reproduced except in full, without prior written approval of the Company. Any unauthorized alteration, forgery or falsification of the content or appearance of this document is unlawful and offenders may be prosecuted to the fullest extent of the law." Unless otherwise stated the results shown in this test report refer only to the sample(s) tested and such sample(s) are retained for 90 days only

Customer: **PIERRE FREY SAS** Test Report No: **155843**

### Test Results

## **BS EN 1021 -1 & 2:2014** **Assessment of the ignitability of upholstered furniture** **Part 1 – Ignition source smouldering cigarette / Part 2 – Ignition source match flame**

Description of Test Sample: Cream/brown fabric

### Test Requested

The test specimen has been tested to BS EN 1021 – 1 & 2: 2014 Smouldering cigarette and match flame.

### Pre – Treatment

The customer has stated that the supplied test specimen has not been chemically treated so therefore no water soaking procedure has been performed.

### Conditioning

All materials to be tested and the cigarettes have been conditioned for at least 24 hours immediately before the tests in an atmosphere  $23 \pm 2^{\circ}\text{C}$  and  $50 \pm 5\%$  r.h.

### Comments on Test Results

The test specimen does not meet the requirements of BS EN 1021 - 2: 2014 due to flaming ignition.

The test specimen meets the requirements of BS EN 1021 - 1:2014 the result has been stated as non-ignition.

### Test Results

*'The test results relate only to the ignitability of the combination of materials under particular conditions of test; they are not intended as a means of assessing the full fire hazard of the materials in use.'*

This document is issued by the Company under its General Conditions of Service accessible at [www.sgs.com/terms\\_and\\_conditions.htm](http://www.sgs.com/terms_and_conditions.htm) and, for electronic format documents, subject to Terms and Conditions for Electronic Documents at <http://www.sgs.com/en/Terms-and-Conditions.aspx>. Attention is drawn to the limitation of liability, indemnification and jurisdiction issues defined therein. Any holder of this document is advised that information contained hereon reflects the Company's findings at the time of its intervention only and within the limits of Client's instructions, if any. The Company's sole responsibility is to its Client and this document does not exonerate parties to a transaction from exercising all their rights and obligations under the transaction documents. This document cannot be reproduced except in full, without prior written approval of the Company. Any unauthorized alteration, forgery or falsification of the content or appearance of this document is unlawful and offenders may be prosecuted to the fullest extent of the law." Unless otherwise stated the results shown in this test report refer only to the sample(s) tested and such sample(s) are retained for 90 days only

Customer: **PIERRE FREY SAS** Test Report No: **155843**

**Test Results**

**Ignition source Smouldering Cigarette**

	Criteria of ignition	Cigarette 1 Criteria Observed	Cigarette 2 Criteria Observed
<i>Progressive smouldering ignition</i>	Clause 3.1a	No	No
	Clause 3.1b	No	No
	Clause 3.1c	No	No
	Clause 3.1d	No	No
	Clause 3.1e	No	No
<i>Flaming Ignition</i>	Occurrence of flames	No	No
	<b>Ignition occurring</b>	Non – Ignition	Non – Ignition

**Ignition source Match Flame**

	Criteria of Ignition	Match Flame 1 Criteria Observed
<i>Progressive smouldering ignition</i>	Clause 3.1a	No
	Clause 3.1b	No
	Clause 3.1c	No
	Clause 3.1d	No
	Clause 3.1e	No
<i>Flaming Ignition</i>	Clause 3.2a	Yes
	Clause 3.2b	Yes
	Clause 3.2c	No
	Clause 3.2d	No
	<b>Ignition occurring</b>	Ignition - Flaming

The test specimen was tested over Combustion modified foam (CMHR) with a density of 35kg/m<sup>3</sup>.

This document is issued by the Company under its General Conditions of Service accessible at [www.sgs.com/terms\\_and\\_conditions.htm](http://www.sgs.com/terms_and_conditions.htm) and, for electronic format documents, subject to Terms and Conditions for Electronic Documents at <http://www.sgs.com/en/Terms-and-Conditions.aspx>. Attention is drawn to the limitation of liability, indemnification and jurisdiction issues defined therein. Any holder of this document is advised that information contained hereon reflects the Company's findings at the time of its intervention only and within the limits of Client's instructions, if any. The Company's sole responsibility is to its Client and this document does not exonerate parties to a transaction from exercising all their rights and obligations under the transaction documents. This document cannot be reproduced except in full, without prior written approval of the Company. Any unauthorized alteration, forgery or falsification of the content or appearance of this document is unlawful and offenders may be prosecuted to the fullest extent of the law." Unless otherwise stated the results shown in this test report refer only to the sample(s) tested and such sample(s) are retained for 90 days only

**Customer:** PIERRE FREY SAS      **Test Report No:** 155843

## Test Results

### Smouldering criteria of Ignition

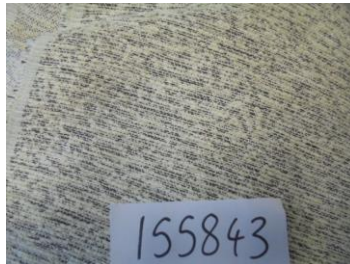
- Clause 3.1a – Test assembly displays escalating combustion behaviour so that it is unsafe to continue
- Clause 3.1b – Test assembly that smoulders until it is largely consumed
- Clause 3.1c – Test assembly that smoulders to the extremities within the test duration
- Clause 3.1d – Test assembly that smoulders after one hour from application of the ignition source
- Clause 3.1e – Test assembly on final examination shows evidence of progressive smouldering

### Flaming Ignition

- Clause 3.2a – Test assembly displays escalating combustion behaviour so that it is unsafe to continue
- Clause 3.2b – Test assembly burns until it is essentially consumed
- Clause 3.2c – Flame reaches the lower margin, either side or passed through the full thickness
- Clause 3.2d – Flaming continues for more than 120 seconds after removal of burner tube

**Crib 5**      **To follow**

End of Report



This document is issued by the Company under its General Conditions of Service accessible at [www.sgs.com/terms\\_and\\_conditions.htm](http://www.sgs.com/terms_and_conditions.htm) and, for electronic format documents, subject to Terms and Conditions for Electronic Documents at <http://www.sgs.com/en/Terms-and-Conditions.aspx>. Attention is drawn to the limitation of liability, indemnification and jurisdiction issues defined therein. Any holder of this document is advised that information contained hereon reflects the Company's findings at the time of its intervention only and within the limits of Client's instructions, if any. The Company's sole responsibility is to its Client and this document does not exonerate parties to a transaction from exercising all their rights and obligations under the transaction documents. This document cannot be reproduced except in full, without prior written approval of the Company. Any unauthorized alteration, forgery or falsification of the content or appearance of this document is unlawful and offenders may be prosecuted to the fullest extent of the law." Unless otherwise stated the results shown in this test report refer only to the sample(s) tested and such sample(s) are retained for 90 days only