

TEST REPORT NO: 164393

Date: 10 August 2020

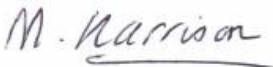
**PIERRE FREY SAS
47 RUE DES PETITS CHAMPS
75001 PARIS
FRANCE**

The following sample(s) was/were submitted and identified by/on behalf of the client as:

Retailer	Not Specified
Description of article	F3496 MARION FABRIC
Retailer style number	CREAM
Retailer Standard Number	UNKNOWN
Order No./ Buyer	2110176
Quality/Fibre Composition	88% LIN 12% COTTON
Date Sample(s) Received:	06 August 2020

Tests	Pass	Fail	Remarks
BS5852 Crib 5		X	
Schedule 4 Parts I Cigarette Test	X		
Schedule 5 Part I Match Test	X		
BS EN 1021-1 Ignition Source 0	X		
BS EN 1021-2 Ignition Source 1	X		

Signature



M. Harrison Laboratory Manager

For and on behalf of
SGS United Kingdom Ltd

All samples are conditioned to ISO 139 where conditioning is required (unless otherwise stated)

This document is issued by the Company under its General Conditions of Service accessible at www.sgs.com/terms_and_conditions.htm and, for electronic format documents, subject to Terms and Conditions for Electronic Documents at <http://www.sgs.com/en/Terms-and-Conditions.aspx>. Attention is drawn to the limitation of liability, indemnification and jurisdiction issues defined therein. Any holder of this document is advised that information contained hereon reflects the Company's findings at the time of its intervention only and within the limits of Client's instructions, if any. The Company's sole responsibility is to its Client and this document does not exonerate parties to a transaction from exercising all their rights and obligations under the transaction documents. This document cannot be reproduced except in full, without prior written approval of the Company. Any unauthorized alteration, forgery or falsification of the content or appearance of this document is unlawful and offenders may be prosecuted to the fullest extent of the law. Unless otherwise stated the results shown in this test report refer only to the sample(s) tested and such sample(s) are retained for 30 days only

Customer: PIERRE FREY SAS **Test Report No:** 164393

Test Results

BS 5852: Part 1: 1979

Methods of test for the ignitability by smokers' materials of upholstered composites for seating.

Test Requested

The test specimen supplied is a cream fabric and has been tested using ignition sources 0 and 1 using the following test method BS 5852: Part 1: 1979.

Fibre Identification

Stated Fibre Composition: 88% Linen 12% Cotton

Conditioning

The materials to be tested and cigarettes were conditioned immediately before the test for 72 hours in an indoor ambient condition and then for at least 16 hours in an atmosphere having a temperature of $20 \pm 5^{\circ}\text{C}$ and a relative humidity of $50 \pm 20\%$.

Comments of Test Results

The test specimen meets the requirements of clause 9 from BS 5852: Part 1: 1979 using ignition source 0 and 1.

Results

'The following tests results relate only to the ignitability of the combination of materials under the particular conditions of test; they are not intended as a means of assessing the full potential fire hazard of the materials in use'

This document is issued by the Company under its General Conditions of Service accessible at www.sgs.com/terms_and_conditions.htm and, for electronic format documents, subject to Terms and Conditions for Electronic Documents at <http://www.sgs.com/en/Terms-and-Conditions.aspx>. Attention is drawn to the limitation of liability, indemnification and jurisdiction issues defined therein. Any holder of this document is advised that information contained hereon reflects the Company's findings at the time of its intervention only and within the limits of Client's instructions, if any. The Company's sole responsibility is to its Client and this document does not exonerate parties to a transaction from exercising all their rights and obligations under the transaction documents. This document cannot be reproduced except in full, without prior written approval of the Company. Any unauthorized alteration, forgery or falsification of the content or appearance of this document is unlawful and offenders may be prosecuted to the fullest extent of the law." Unless otherwise stated the results shown in this test report refer only to the sample(s) tested and such sample(s) are retained for 90 days only

Customer: PIERRE FREY SAS **Test Report No:** 164393

Test Results

Two cigarettes are placed along the junction between the horizontal and vertical test pieces in accordance with Clause 9.2.2. No progressive smouldering or flaming is to be observed within 1 hour of placement of the cigarette (Clause 9.2.4).

The Cigarette Test		
	Cigarette 1	Cigarette 2
Clause 9.2.3 Evidence of Progressive Smouldering/ Flaming or Afterglow.	No	No
Cover Splitting	No	No
Clause 9.4 Any Internal Progressive Smouldering during the Final Examination	No	No
Test Result	Pass	Pass

A butane flame is applied at the junction between the horizontal and vertical test pieces for a period 20 ± 1 second in accordance with clause 9.3.2. No Flaming or Progressive Smouldering is to be observed after 2 minutes of the removal of the burner tube (Clause 9.3.4).

The Match Test		
	Match 1	Match 2
Clause 9.3.4 Evidence of Flaming/ Progressive Smouldering/ Afterglow or Smoking	No	No
Cover Splitting	No	No
Clause 9.4 Any Internal Progressive Smouldering during the Final Examination	No	No
Test Result	Pass	Pass

Smouldering Cigarette test and the match test were carried out over Non-Fire Retardant Polyurethane Foam Density of 20-22 Kg per m³. The face of the fabric was tested.

This document is issued by the Company under its General Conditions of Service accessible at www.sgs.com/terms_and_conditions.htm and, for electronic format documents, subject to Terms and Conditions for Electronic Documents at <http://www.sgs.com/en/Terms-and-Conditions.aspx>. Attention is drawn to the limitation of liability, indemnification and jurisdiction issues defined therein. Any holder of this document is advised that information contained hereon reflects the Company's findings at the time of its intervention only and within the limits of Client's instructions, if any. The Company's sole responsibility is to its Client and this document does not exonerate parties to a transaction from exercising all their rights and obligations under the transaction documents. This document cannot be reproduced except in full, without prior written approval of the Company. Any unauthorized alteration, forgery or falsification of the content or appearance of this document is unlawful and offenders may be prosecuted to the fullest extent of the law. Unless otherwise stated the results shown in this test report refer only to the sample(s) tested and such sample(s) are retained for 90 days only

Customer: **PIERRE FREY SAS** Test Report No: **164393**

Test Results

BS EN 1021 -1 & 2:2014
Assessment of the ignitability of upholstered furniture
Part 1 – Ignition source smouldering cigarette / Part 2 – Ignition source match flame

Description of Test Sample: Cream fabric

Test Requested

The test specimen has been tested to BS EN 1021 – 1 & 2: 2014 Smouldering cigarette and match flame.

Pre – Treatment

The customer has stated that the supplied test specimen has not been chemically treated so therefore no water soaking procedure has been performed.

Conditioning

All materials to be tested and the cigarettes have been conditioned for at least 24 hours immediately before the tests in an atmosphere $23 \pm 2^{\circ}\text{C}$ and $50 \pm 5\%$ r.h.

Comments on Test Results

The test specimen meets the requirements of BS EN 1021-1 & 2: 2014 where the result for both tests has been stated as non-ignition.

This document is issued by the Company under its General Conditions of Service accessible at www.sgs.com/terms_and_conditions.htm and, for electronic format documents, subject to Terms and Conditions for Electronic Documents at <http://www.sgs.com/en/Terms-and-Conditions.aspx>. Attention is drawn to the limitation of liability, indemnification and jurisdiction issues defined therein. Any holder of this document is advised that information contained hereon reflects the Company's findings at the time of its intervention only and within the limits of Client's instructions, if any. The Company's sole responsibility is to its Client and this document does not exonerate parties to a transaction from exercising all their rights and obligations under the transaction documents. This document cannot be reproduced except in full, without prior written approval of the Company. Any unauthorized alteration, forgery or falsification of the content or appearance of this document is unlawful and offenders may be prosecuted to the fullest extent of the law." Unless otherwise stated the results shown in this test report refer only to the sample(s) tested and such sample(s) are retained for 90 days only

Customer: PIERRE FREY SAS **Test Report No:** 164393

Test Results

Test Results

'The test results relate only to the ignitability of the combination of materials under particular conditions of test; they are not intended as a means of assessing the full fire hazard of the materials in use.'

Ignition source Smouldering Cigarette

	Criteria of ignition	Cigarette 1 Criteria Observed	Cigarette 2 Criteria Observed
Progressive smouldering ignition	Clause 3.1a	No	No
	Clause 3.1b	No	No
	Clause 3.1c	No	No
	Clause 3.1d	No	No
	Clause 3.1e	No	No
Flaming Ignition	Occurrence of flames	No	No
	Ignition occurring	Non – Ignition	Non – Ignition

This document is issued by the Company under its General Conditions of Service accessible at www.sgs.com/terms_and_conditions.htm and, for electronic format documents, subject to Terms and Conditions for Electronic Documents at <http://www.sgs.com/en/Terms-and-Conditions.aspx>. Attention is drawn to the limitation of liability, indemnification and jurisdiction issues defined therein. Any holder of this document is advised that information contained hereon reflects the Company's findings at the time of its intervention only and within the limits of Client's instructions, if any. The Company's sole responsibility is to its Client and this document does not exonerate parties to a transaction from exercising all their rights and obligations under the transaction documents. This document cannot be reproduced except in full, without prior written approval of the Company. Any unauthorized alteration, forgery or falsification of the content or appearance of this document is unlawful and offenders may be prosecuted to the fullest extent of the law." Unless otherwise stated the results shown in this test report refer only to the sample(s) tested and such sample(s) are retained for 90 days only

Customer: **PIERRE FREY SAS** Test Report No: **164393**

Test Results

Ignition source Match Flame

	Criteria of Ignition	Match Flame 1 Criteria Observed	Match Flame 2 Criteria Observed
Progressive smouldering ignition	Clause 3.1a	No	No
	Clause 3.1b	No	No
	Clause 3.1c	No	No
	Clause 3.1d	No	No
	Clause 3.1e	No	No
Flaming Ignition	Clause 3.2a	No	No
	Clause 3.2b	No	No
	Clause 3.2c	No	No
	Clause 3.2d	No	No
	Ignition occurring	Non – Ignition	Non – Ignition

The test specimen was tested over Combustion modified foam (CMHR) with a density of 35kg/m³.

Smouldering criteria of Ignition

- Clause 3.1a – Test assembly displays escalating combustion behaviour so that it is unsafe to continue
- Clause 3.1b – Test assembly that smoulders until it is largely consumed
- Clause 3.1c – Test assembly that smoulders to the extremities within the test duration
- Clause 3.1d – Test assembly that smoulders after one hour from application of the ignition source
- Clause 3.1e – Test assembly on final examination shows evidence of progressive smouldering

Flaming Ignition

- Clause 3.2a – Test assembly displays escalating combustion behaviour so that it is unsafe to continue
- Clause 3.2b – Test assembly burns until it is essentially consumed
- Clause 3.2c – Flame reaches the lower margin, either side or passed through the full thickness
- Clause 3.2d – Flaming continues for more than 120 seconds after removal of burner tube

This document is issued by the Company under its General Conditions of Service accessible at www.sgs.com/terms_and_conditions.htm and, for electronic format documents, subject to Terms and Conditions for Electronic Documents at <http://www.sgs.com/en/Terms-and-Conditions.aspx>. Attention is drawn to the limitation of liability, indemnification and jurisdiction issues defined therein. Any holder of this document is advised that information contained hereon reflects the Company's findings at the time of its intervention only and within the limits of Client's instructions, if any. The Company's sole responsibility is to its Client and this document does not exonerate parties to a transaction from exercising all their rights and obligations under the transaction documents. This document cannot be reproduced except in full, without prior written approval of the Company. Any unauthorized alteration, forgery or falsification of the content or appearance of this document is unlawful and offenders may be prosecuted to the fullest extent of the law. Unless otherwise stated the results shown in this test report refer only to the sample(s) tested and such sample(s) are retained for 90 days only

Customer: **PIERRE FREY SAS** Test Report No: **164393**

Test Results

BS 5852: 2006

Clause 11 using Ignition Source 5

Methods of test for assessment of the ignitability of upholstered seating by smouldering and flaming ignition sources

Description of Test Sample: Cream fabric

Test Request

The sample supplied has been tested against the test method BS 5852: 2006 Clause 11 using ignition source 5.

Pre - Treatment

The customer has stated that the supplied test specimen has not been chemically treated so therefore no water soaking procedure has been performed.

Conditioning

The materials and cribs were conditioned for at least 72 hours in an indoor ambient temperature and then immediately before the test 24 hours in an atmosphere of $23 \pm 2^\circ\text{C}$ and $50 \pm 5\%$ r.h.

Comments on Test Results

The sample supplied does not meet the requirements of BS 5852: 2006 Clause 11, using ignition source 5 due to failure against the clauses stated in the results table.

Test Results

"The following test results relate only to the ignitability of the combination of upholstery composites (BS 5852:2006, Clause 11) under the particular conditions of test stated; they are not intended as a means of assessing the full potential fire hazard of the materials or products in use"

This document is issued by the Company under its General Conditions of Service accessible at www.sgs.com/terms_and_conditions.htm and, for electronic format documents, subject to Terms and Conditions for Electronic Documents at <http://www.sgs.com/en/Terms-and-Conditions.aspx>. Attention is drawn to the limitation of liability, indemnification and jurisdiction issues defined therein. Any holder of this document is advised that information contained hereon reflects the Company's findings at the time of its intervention only and within the limits of Client's instructions, if any. The Company's sole responsibility is to its Client and this document does not exonerate parties to a transaction from exercising all their rights and obligations under the transaction documents. This document cannot be reproduced except in full, without prior written approval of the Company. Any unauthorized alteration, forgery or falsification of the content or appearance of this document is unlawful and offenders may be prosecuted to the fullest extent of the law." Unless otherwise stated the results shown in this test report refer only to the sample(s) tested and such sample(s) are retained for 90 days only

Customer: **PIERRE FREY SAS** Test Report No: **164393**

Test Results

	Criteria of Ignition	Test 1 Criteria Observed
Progressive smouldering ignition	Clause 4.1.1 a	N/A
	Clause 4.1.1 c	N/A
	Clause 4.1.1 e	N/A
	Clause 4.1.1 f	N/A
Flaming Ignition	Clause 4.2.1 a	No
	Clause 4.2.1 b	Yes
	Clause 4.2.1 c	No
	Clause 4.2.1 e	Yes
	Clause 4.2.1 g	No
Ignition occurring		Ignition (Flaming)

The test specimen was tested over Combustion modified foam (CMHR) with a density of 35kg/m³.

Criteria of Ignition

Smouldering Ignition

- Clause 4.1.1 (a) Test specimen displays escalating smouldering combustion behaviour so that it is unsafe to continue and requires forcible extinction.
- Clause 4.1.1 (c) Test specimen smoulders until it is essentially consumed or smoulders to the extremities.
- Clause 4.1.1 (e) Test specimen produces externally detectable amounts of smoke, heat or glowing 60 min after ignition of the crib.
- Clause 4.1.1 (f) Test specimen shows evidence of charring within the filling more than 100 mm in any direction apart from upwards.

Flaming Ignition

- Clause 4.2.1 (a) Test specimen displays escalating flaming combustion behaviour and requires forcible extinction.
- Clause 4.2.1 (b) Test specimen that burns until it is essentially consumed within the test duration.
- Clause 4.2.1 (c) Test specimen on which any flame front reaches the extremities of the test specimen other than the top of the vertical part, or passes through the full thickness of the specimen within the test duration.
- Clause 4.2.1 (e) Test specimen continues to flame for more than 10 minutes.
- Clause 4.2.1 (g) Test specimen from which flaming debris causes an isolated floor fire that continues to flame for longer than 10 minutes.

This document is issued by the Company under its General Conditions of Service accessible at www.sgs.com/terms_and_conditions.htm and, for electronic format documents, subject to Terms and Conditions for Electronic Documents at <http://www.sgs.com/en/Terms-and-Conditions.aspx>. Attention is drawn to the limitation of liability, indemnification and jurisdiction issues defined therein. Any holder of this document is advised that information contained hereon reflects the Company's findings at the time of its intervention only and within the limits of Client's instructions, if any. The Company's sole responsibility is to its Client and this document does not exonerate parties to a transaction from exercising all their rights and obligations under the transaction documents. This document cannot be reproduced except in full, without prior written approval of the Company. Any unauthorized alteration, forgery or falsification of the content or appearance of this document is unlawful and offenders may be prosecuted to the fullest extent of the law. Unless otherwise stated the results shown in this test report refer only to the sample(s) tested and such sample(s) are retained for 90 days only

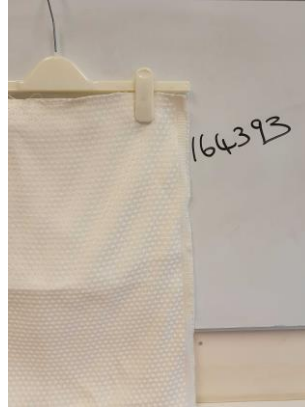
Customer:

PIERRE FREY SAS

Test Report No:

164393

Test Results



End of Report

This document is issued by the Company under its General Conditions of Service accessible at www.sgs.com/terms_and_conditions.htm and, for electronic format documents, subject to Terms and Conditions for Electronic Documents at <http://www.sgs.com/en/Terms-and-Conditions.aspx>. Attention is drawn to the limitation of liability, indemnification and jurisdiction issues defined therein. Any holder of this document is advised that information contained hereon reflects the Company's findings at the time of its intervention only and within the limits of Client's instructions, if any. The Company's sole responsibility is to its Client and this document does not exonerate parties to a transaction from exercising all their rights and obligations under the transaction documents. This document cannot be reproduced except in full, without prior written approval of the Company. Any unauthorized alteration, forgery or falsification of the content or appearance of this document is unlawful and offenders may be prosecuted to the fullest extent of the law. Unless otherwise stated the results shown in this test report refer only to the sample(s) tested and such sample(s) are retained for 90 days only