


# BP334001 SHIVA

Soie sauvage unie en 13 coloris, rappelant l'opulence et les teintes chatoyantes des robes de cour Second Empire. Ces soies contrecollées sont le mariage parfait entre un savoir-faire oriental séculaire et la vision novatrice de la Maison.

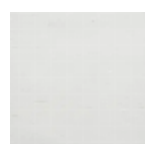
## BP334001 - Chantilly



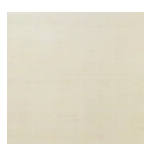
## Braquenié

|                       |   |
|-----------------------|---|
| <b>TYPE</b>           | Unis & faux unis - Tissus contrecollés  |
| <b>UNITÉ DE VENTE</b> | Disponible au mètre   |
| <b>SUPPORT</b>        | INTISSE   |
| <b>COMPOSITION</b>    | 100 % Soie  |
| <b>LAIZE</b>          | 132 cm / 51,96 inch   |
| <b>RACCORD</b>        | Raccord libre   |
| <b>POIDS</b>          | 194 gr / m <sup>2</sup>   |
| <b>ENTRETIEN</b>      |  |
| <b>EMARGEMENT</b>     | Emargé  |
| <b>POSE/DÉPOSE</b>    | Encoller le mur<br>Arrachable à sec   |
| <b>CERTIFICATIONS</b> | EUROCLASS B-s1,d0<br>ASTM E84 Class A   |
| <b>INFORMATIONS</b>   | Irrégularité naturelle de la fibre<br>Effet panneautage                             |
| <b>LIASSE</b>         | B9979PPBRAQ7<br>B9979PPBRAQ5  |

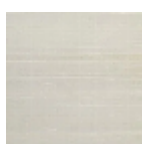
## 25 Couleurs



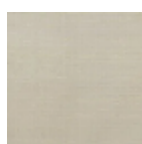
BP334001  
Chantilly



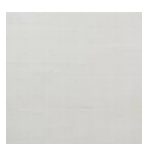
BP334002  
Crème



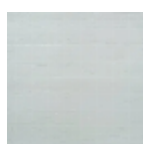
BP334003  
Beige



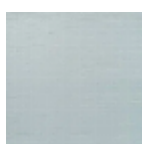
BP334004  
Lin



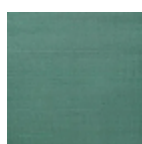
BP334005  
Gris



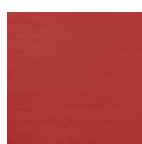
BP334006  
Ciel



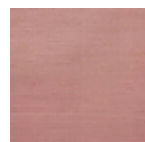
BP334007  
Bleu



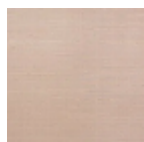
BP334008  
Émeraude



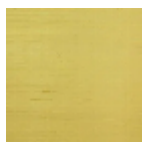
BP334009  
Rouge



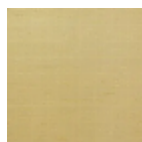
BP334010  
Corail



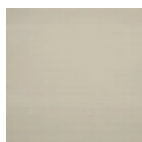
BP334011  
Pétale



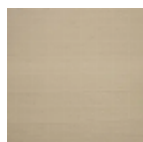
BP334012  
Jaune



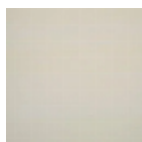
BP334013  
Or



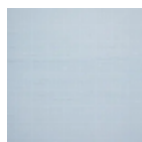
BP334014  
Craie



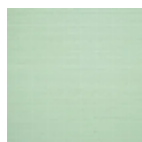
BP334015  
Chanvre



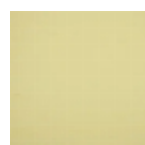
BP334017  
Nuage



BP334018  
Source



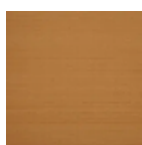
BP334019  
Saugé



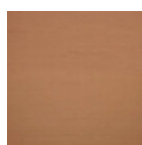
BP334020  
Citronnade



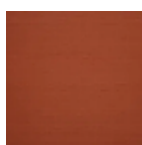
BP334021  
Blond



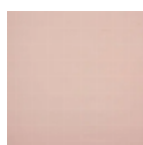
BP334022  
Cassonade



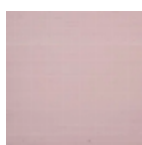
BP334023  
Biche



BP334025  
Roussillon



BP334026  
Poudre



BP334027  
Ballerine