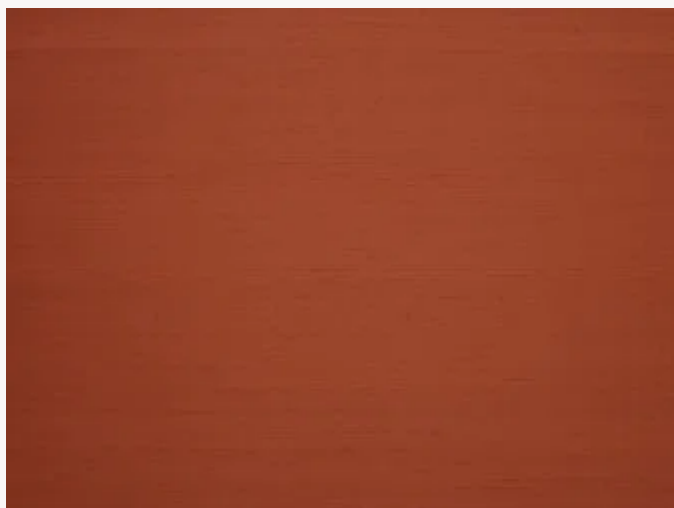


# BP334025 SHIVA


Soie sauvage unie en 13 coloris, rappelant l'opulence et les teintes chatoyantes des robes de cour Second Empire. Ces soies contrecollées sont le mariage parfait entre un savoir-faire oriental séculaire et la vision novatrice de la Maison.

## BP334025 - Roussillon



← Laize : 132,00 cm / 51,96 inch →

## Braquenié

<b>TYPE</b>	Unis & faux unis - Tissus contrecollés
<b>UNITÉ DE VENTE</b>	Disponible au mètre
<b>SUPPORT</b>	INTISSE
<b>COMPOSITION</b>	100 % Soie
<b>LAIZE</b>	132 cm / 51,96 inch
<b>RACCORD</b>	Raccord libre
<b>POIDS</b>	194 gr / m <sup>2</sup>
<b>ENTRETIEN</b>	
<b>EMARGEMENT</b>	Emargé
<b>POSE/DÉPOSE</b>	Encoller le mur Arrachable à sec
<b>CERTIFICATIONS</b>	EUROCLASS B-s1,d0 ASTM E84 Class A
<b>INFORMATIONS</b>	Irrégularité naturelle de la fibre Effet panneautage
<b>LIASSE</b>	B9979PPBRAQ7

## 25 Couleurs



BP334001  
Chantilly



BP334002  
Crème



BP334003  
Beige



BP334004  
Lin



BP334005  
Gris



BP334006  
Ciel



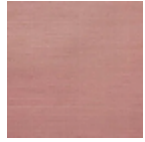
BP334007  
Bleu



BP334008  
Émeraude



BP334009  
Rouge



BP334010  
Corail



BP334011  
Pétale



BP334012  
Jaune



BP334013  
Or



BP334014  
Craie



BP334015  
Chanvre



BP334017  
Nuage



BP334018  
Source



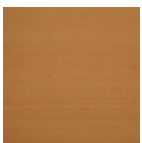
BP334019  
Saugé



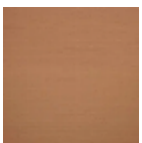
BP334020  
Citronnade



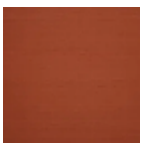
BP334021  
Blond



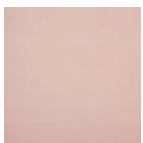
BP334022  
Cassonade



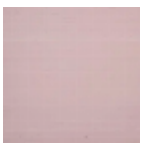
BP334023  
Biche



BP334025  
Roussillon



BP334026  
Poudre



BP334027  
Ballerine