

## BP334027 SHIVA


Soie sauvage unie en 13 coloris, rappelant l'opulence et les teintes chatoyantes des robes de cour Second Empire. Ces soies contrecollées sont le mariage parfait entre un savoir-faire oriental séculaire et la vision novatrice de la Maison.

### BP334027 - Ballerine



Laize : 132,00 cm / 51,96 inch

### Braquenié

|                       |   |
|-----------------------|---|
| <b>TYPE</b>           | Unis & faux unis - Tissus contrecollés  |
| <b>UNITÉ DE VENTE</b> | Disponible au mètre   |
| <b>SUPPORT</b>        | INTISSE   |
| <b>COMPOSITION</b>    | 100 % Soie  |
| <b>LAIZE</b>          | 132 cm / 51,96 inch   |
| <b>RACCORD</b>        | Raccord libre   |
| <b>POIDS</b>          | 194 gr / m <sup>2</sup>   |
| <b>ENTRETIEN</b>      |  |
| <b>EMARGEMENT</b>     | Emargé  |
| <b>POSE/DÉPOSE</b>    | Encoller le mur<br>Arrachable à sec   |
| <b>CERTIFICATIONS</b> | EUROCLASS B-s1,d0<br>ASTM E84 Class A   |
| <b>INFORMATIONS</b>   | Irrégularité naturelle de la fibre<br>Effet panneautage                             |
| <b>LIASSE</b>         | B9979PPBRAQ7<br>B9979PPBRAQ5  |

## 25 Couleurs



BP334001  
Chantilly



BP334002  
Crème



BP334003  
Beige



BP334004  
Lin



BP334005  
Gris



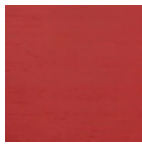
BP334006  
Ciel



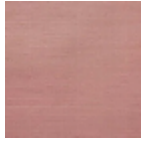
BP334007  
Bleu



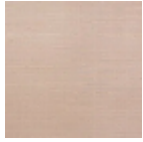
BP334008  
Émeraude



BP334009  
Rouge



BP334010  
Corail



BP334011  
Pétale



BP334012  
Jaune



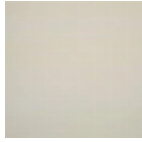
BP334013  
Or



BP334014  
Craie



BP334015  
Chanvre



BP334017  
Nuage



BP334018  
Source



BP334019  
Saugé



BP334020  
Citronnade



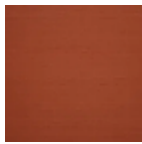
BP334021  
Blond



BP334022  
Cassonade



BP334023  
Biche



BP334025  
Roussillon



BP334026  
Poudre



BP334027  
Ballerine