

# FP865002 MARIUS


Contrecollé sur intissé, MARIUS est un bel uni raphia s'inspirant des nattes de paille traditionnelles du sud de la France. Son aspect satiné et ses reflets de laque apportent une grande modernité à sa gamme de couleurs sophistiquée et délicate.

## FP865002 - Chaux

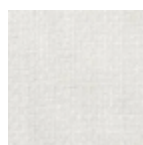


Laize : 128,00 cm / 50,39 inch

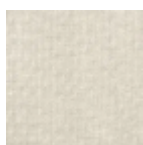
## Pierre Frey

<b>TYPE</b>	Unis & faux unis - Tissus contrecollés
<b>UNITÉ DE VENTE</b>	Disponible au mètre
<b>SUPPORT</b>	INTISSE
<b>COMPOSITION</b>	57 % Polyamide - 43 % Coton
<b>LAIZE</b>	128 cm / 50,39 inch
<b>POIDS</b>	390 gr / m <sup>2</sup>
<b>ENTRETIEN</b>	
<b>EMARGEMENT</b>	Emargé
<b>POSE/DÉPOSE</b>	Encoller le mur Pelable à sec
<b>LIASSE</b>	F9979PPFREY34

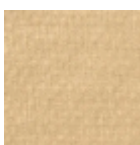
# 10 Couleurs



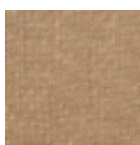
FP865001  
Nacre



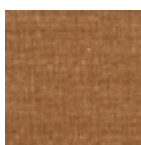
FP865002  
Chaux



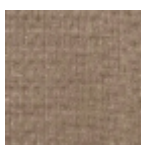
FP865003  
Osier



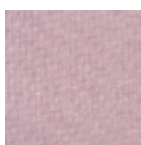
FP865004  
Sable



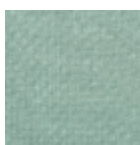
FP865005  
Savane



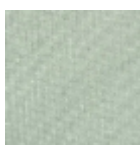
FP865006  
Ecorce



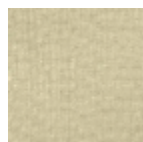
FP865008  
Ballerine



FP865009  
Aquatique



FP865010  
Amande



FP865011  
Mastic