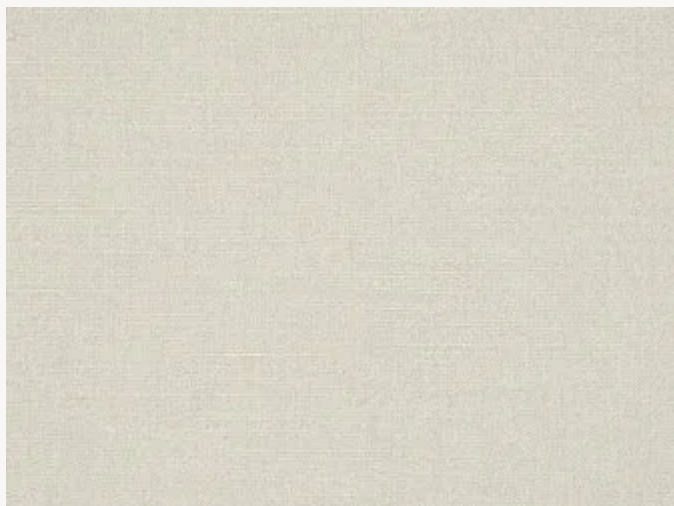


FP921001 RITA


Textile structuré aux fils irréguliers majoritairement composé de lin, contrecollé sur intissé.

FP921001 - Blanc

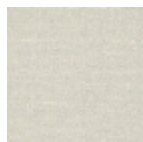


Laize : 137,00 cm / 53,93 inch

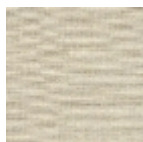
Pierre Frey

TYPE	Unis & faux unis - Tissus contrecollés
UNITÉ DE VENTE	Disponible au mètre
SUPPORT	INTISSE
COMPOSITION	88 % Lin - 12 % Viscose
LAIZE	137 cm / 53,93 inch
RACCORD	Raccord libre
POIDS	280 gr / m ²
ENTRETIEN	
EMARGEMENT	Emargé
POSE/DÉPOSE	Encoller le mur Arrachable au mouillé
CERTIFICATIONS	ASTM E84 Class A
INFORMATIONS	Irrégularité naturelle de la fibre Effet panneautage
LIASSE	F9979PPFREY36

2 Couleurs



FP921001
Blanc



FP921002
Corde