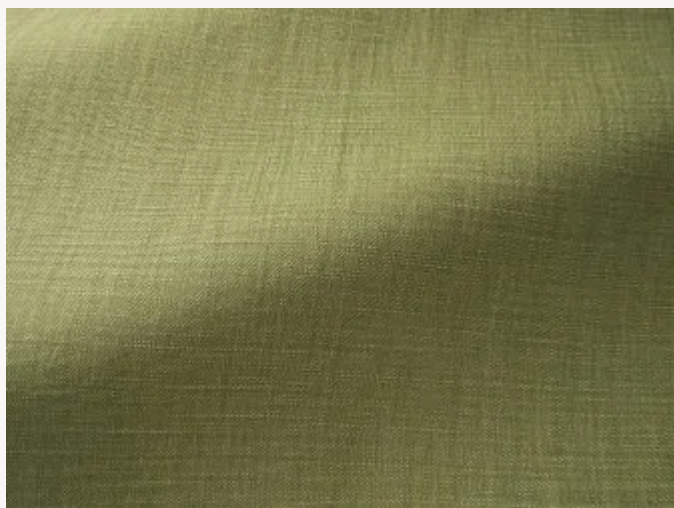


F2484119 SHABBY

Tombé lourd et voluptueux pour cette toile de lin épaisse à l'allure très contemporaine, élégante et intemporelle. Son aspect vintage dû au lavage rend cette matière peu froissable.

F2484119 - Pois



Laize : 145,00 cm / 57,08 inch

Pierre Frey

TYPE	Unis
UTILISATION	Siège normal
MARTINDALE	25.000 T
COMPOSITION	100 % Lin
UNITÉ DE VENTE	Disponible au mètre
LAIZE	145 cm / 57,08 inch
POIDS	725 gr / ml
ENTRETIEN	

CERTIFICATIONS	BS5852 Cigarette & match test CAL TB 117- Pass BS5852 Match test BS5852 Cigarette test NFPA 260-Class 1 EN1021-1-2 en association avec une mousse difficilement inflammable
-----------------------	--

INFORMATIONS	Fibres naturelles donnant un aspect rustique au tissu Finition délavée, tirelle sur pièce recommandée
---------------------	--

LIASSE	F9979212027 F9979212030MINI
---------------	--------------------------------

49 Couleurs



F2484001
Blanc



F2484002
Crème



F2484003
Pierre



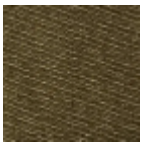
F2484007
Caillou



F2484009
Terre



F2484013
Acier



F2484014
Cachou



F2484018
Buvard



F2484022
Rose



F2484026
Vermillon



F2484030
Absinthe



F2484031
Céladon



F2484039
Eau



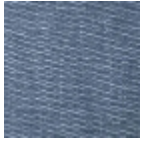
F2484040
Océan



F2484041
Cendre



F2484042
Lin



F2484043
Touareg



F2484044
Indigo



F2484046
Lilas



F2484048
Citron



F2484049
Pamplemouss
e



F2484101
Polaire



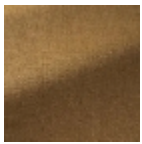
F2484102
Galet



F2484103
Dune



F2484104
Caramel



F2484105
Cigare



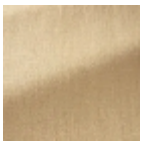
F2484106
Havane



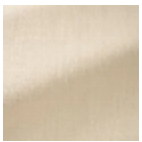
F2484107
Chene



F2484108
Houblon



F2484109
Blond



F2484110
Beurre



F2484111
Opaline



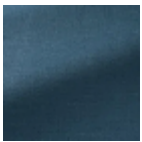
F2484112
Tempete



F2484113
Delft



F2484114
Colvert



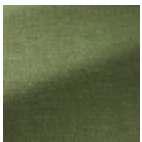
F2484115
Petrole



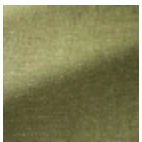
F2484116
Romarin



F2484117
Aqua



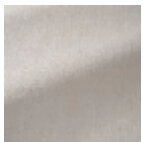
F2484118
Avocat



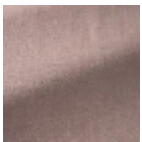
F2484119
Pois



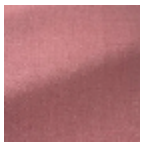
F2484120
Amande



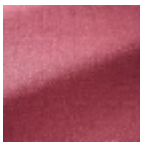
F2484121
Soja



F2484122
Rose ancien



F2484123
Tremiere



F2484124
Romance



F2484125
Raisin



F2484126
Auburn



F2484127
Feu



F2484128
Corallin