



## F3210011 FINE

India Mahdavi signe pour Pierre Frey une collection entièrement dédiée au velours. Matière d'autant plus chère à son cœur, qu'inventée au Cachemire, le "duvet de cygne" a d'abord été utilisé en Iran avant de gagner l'Europe. FINE est un velours de coton uni, d'une grande finesse, au tombé impeccable dont le martindale permet également une utilisation en siège.

### F3210011 - Lime green



Laize : 140,00 cm / 55,11 inch

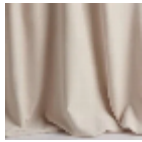
### Pierre Frey

<b>PERFORMANCE</b>	haute résistance
<b>TYPE</b>	-
<b>ARTISTE</b>	India Mahdavi
<b>COLLABORATION</b>	Pour PIERRE FREY
<b>UTILISATION</b>	Siège modéré
<b>MARTINDALE</b>	40.000 T
<b>COMPOSITION</b>	100 % Coton
<b>UNITÉ DE VENTE</b>	Disponible au mètre
<b>LAIZE</b>	140 cm / 55,11 inch
<b>POIDS</b>	420 gr / ml
<b>ENTRETIEN</b>	
<b>CERTIFICATIONS</b>	BS5852 Cigarette test NFPA 260-Class 1
<b>NOTES</b>	Embossed fabrics
<b>INFORMATIONS</b>	Poil 100% coton
<b>LIASSE</b>	F99791710

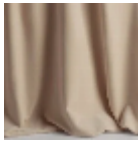
# 31 Couleurs



F3210001  
Nuage



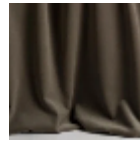
F3210002  
Plâtre



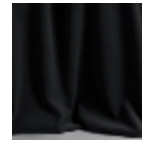
F3210003  
Dune



F3210004  
Fog



F3210005  
Dark clay



F3210006  
Simple black



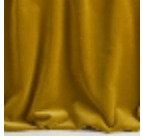
F3210007  
Woods



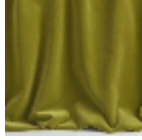
F3210008  
Havane



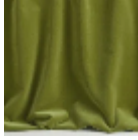
F3210009  
Dijon



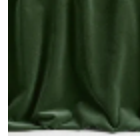
F3210010  
Safran



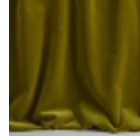
F3210011  
Lime green



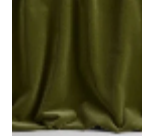
F3210012  
Granny



F3210013  
Sapin



F3210014  
Fougère



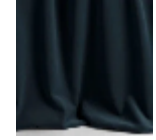
F3210015  
Kiwi



F3210016  
Céladon



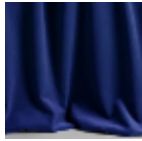
F3210017  
Duck



F3210018  
Méditerranée



F3210019  
Deep sky



F3210020  
Lapis lazuli



F3210021  
God save the  
queen



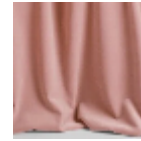
F3210023  
Lily



F3210024  
Piggy



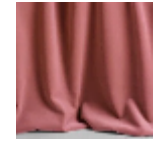
F3210025  
Sketch



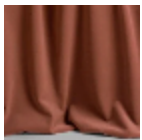
F3210026  
Powder



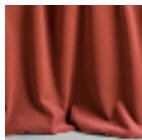
F3210027  
Papaye



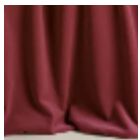
F3210028  
Pêche



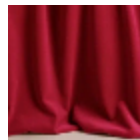
F3210029  
Terracotta



F3210030  
Fire



F3210031  
Wine



F3210032  
In love